

H T Mould China Limited

Thin Wall Product Factory

H T Mould (China) Limited was founded in 2001, specializing in manufacturing plastic molds and plastic injection molded parts. H T Mould was focus on overseas market.

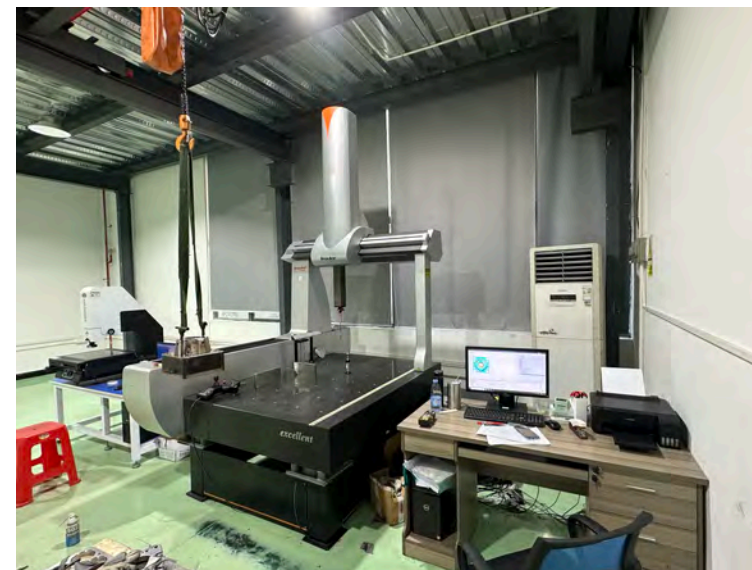
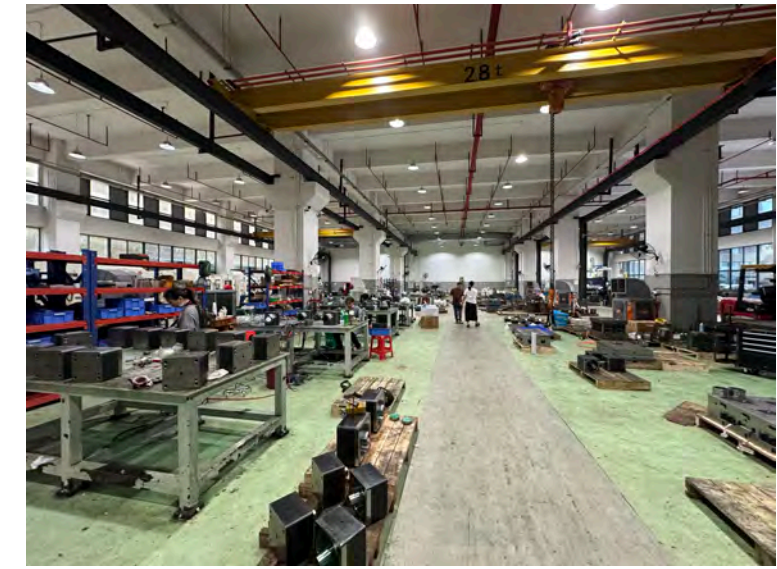
H T Mould has partnered with many OEMs in developing sustainable thin wall plastic Mould and packaging Mould solutions that weigh less, use less material and have a lower overall part cost.

The demand for plastic packaging and plastic parts that are lighter weight and engineered for increased strength using less plastic material, have made thin wall molding a sought-after capability. Typically, “thin wall” is considered as plastics parts or plastic packaging with a wall thickness less than 0.36 mm(0.014 in.).

The process requirements for thin wall plastic injection molding and the thinner wall sections are different than those for standard plastic injection molding, with the need for higher pressures and molding speeds, faster cooling times, and modifications to part ejection and gating arrangements. High-speed plastic injection molding machines, robotic systems, special thin wall plastic injection molds, and proper part design and material selection is also all critical to successful thin wall plastic injection molding.

H T Mould China Limited.

Work Shop View



www.chinamoldshop.com

sales@chinamoldshop.com

Prodcut samples



Food container



Food container



Milk tea cup



Milk tea cup



Milk tea cup



Milk tea cup

Product samples



Milk tea cup



Milk tea cup



Milk tea cup



Milk tea cup

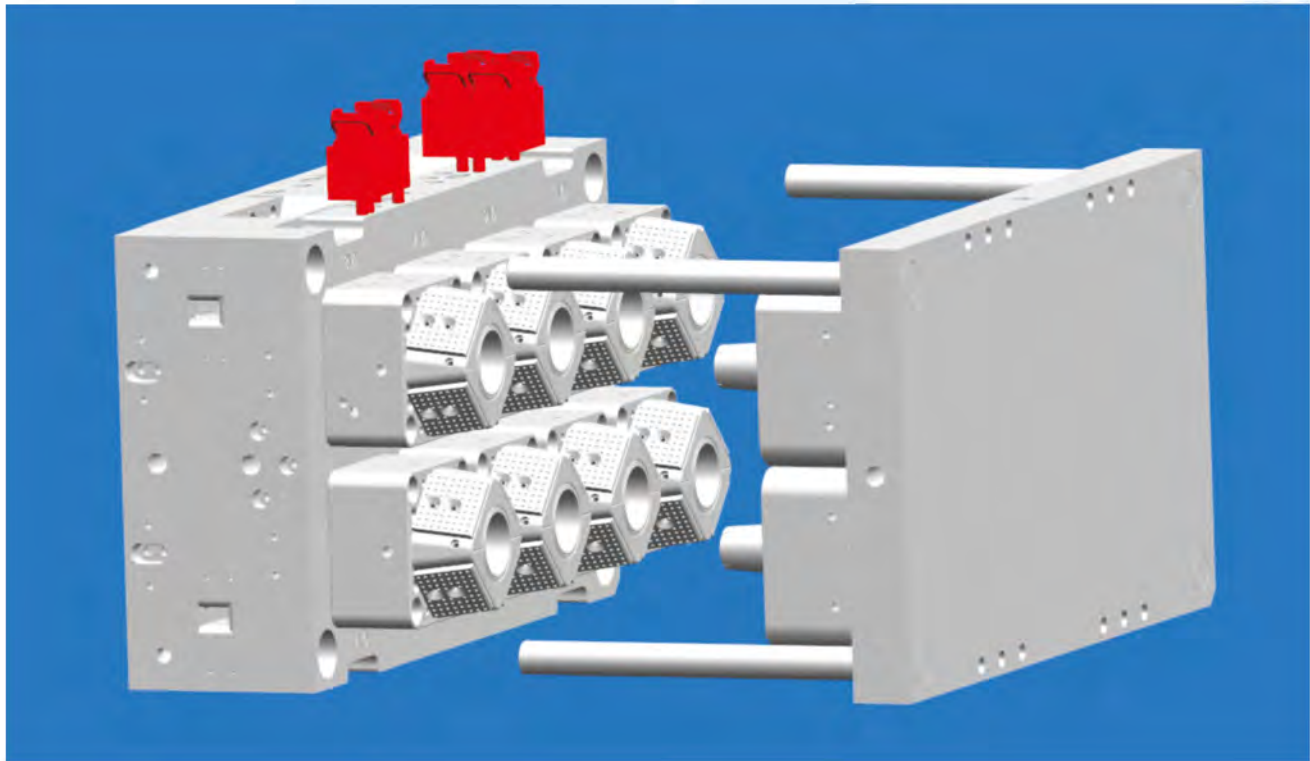
Applications: thin wall plastic injection molding is used in a wide range of applications including:

- Plastic packaging
- Food packaging
- Plastic housings
- Medical devices
- Medical disposables and medical device packaging
- Consumer products and consumer product plastic packaging
- Plastic containers and lids

90650高脚奶茶杯模具示意图

90650 Bubble tea cups

日产量：约 86400 PCS （24小时/天计）
Daily output: approximately 86,400 pieces per day, 24 hours per day.

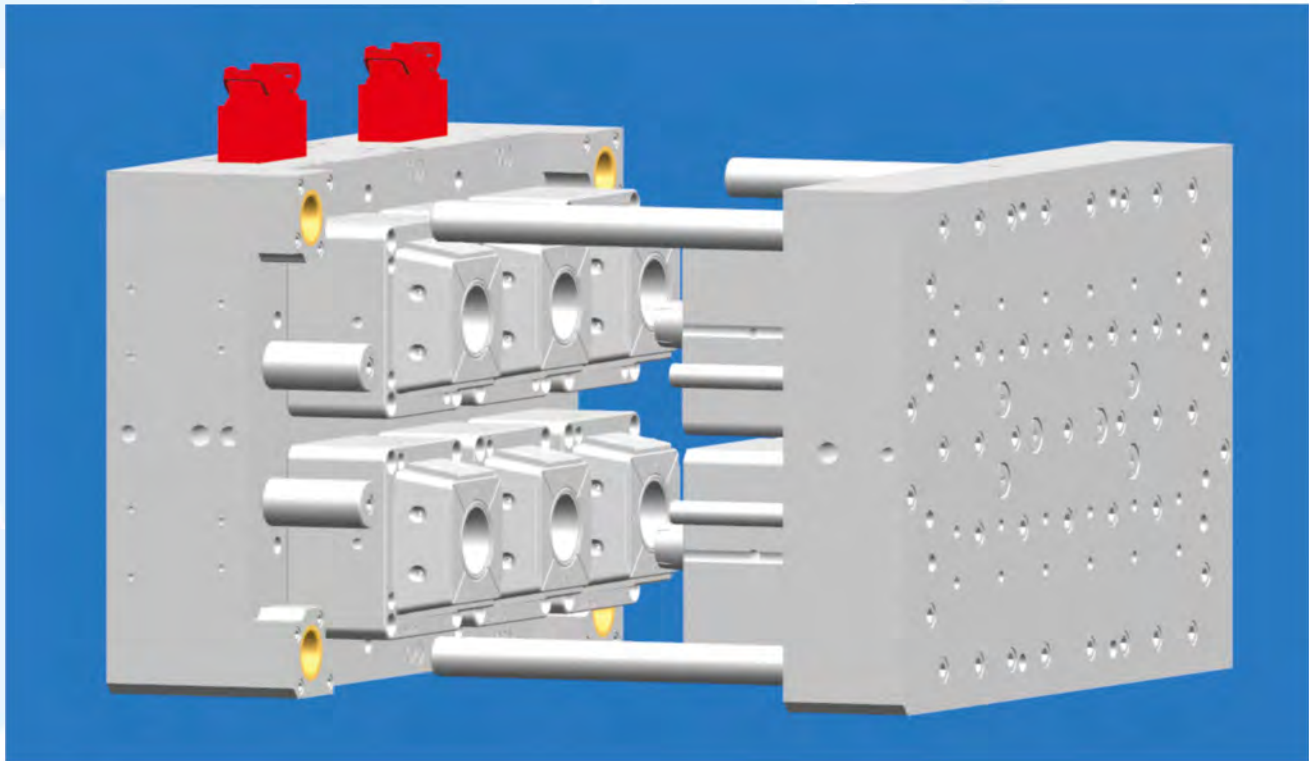


CAVITIES	成型腔数	8CAV
CYCLE TIME	成型周期	8S
MOULD SIZE	模具尺寸	600*1050*595
MACHINE SIZE	适配机型	400T
PP MELT TEMPERATURE	料筒温度	310℃
COOLING WATER TEMPERATURE	冷却水温	18-22℃
COOLING WATER PRESSURE	冷却水压	0.5-0.6Mpa

90650防烫奶茶杯模具示意图

90650 protect against scalding Bubble tea cups

日产量：约 69000 PCS （24小时/天计）
Daily output: approximately 69,000 pieces per day, 24 hours per day.



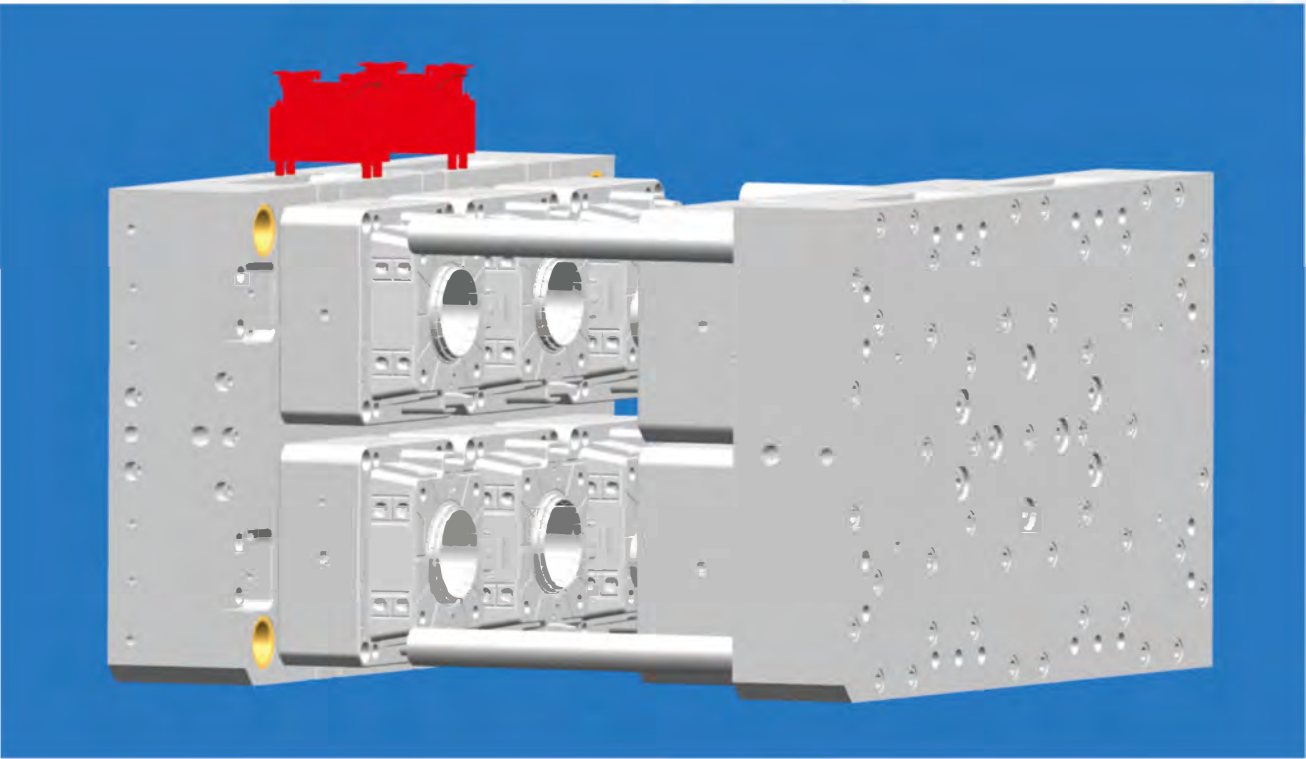
CAVITIES	成型腔数	8CAV
CYCLE TIME	成型周期	10S
MOULD SIZE	模具尺寸	650*1020*665
MACHINE SIZE	适配机型	400T
PP MELT TEMPERATURE	料筒温度	310℃
COOLING WATER TEMPERATURE	冷却水温	18-22℃
COOLING WATER PRESSURE	冷却水压	0.5-0.6Mpa

119-1000水果桶模具示意图

119-1000 fruit drinks bucket

Daily output: approximately 54,500 pieces per day, 24 hours per day.

日产量：约 54500 PCS （24小时/天计）



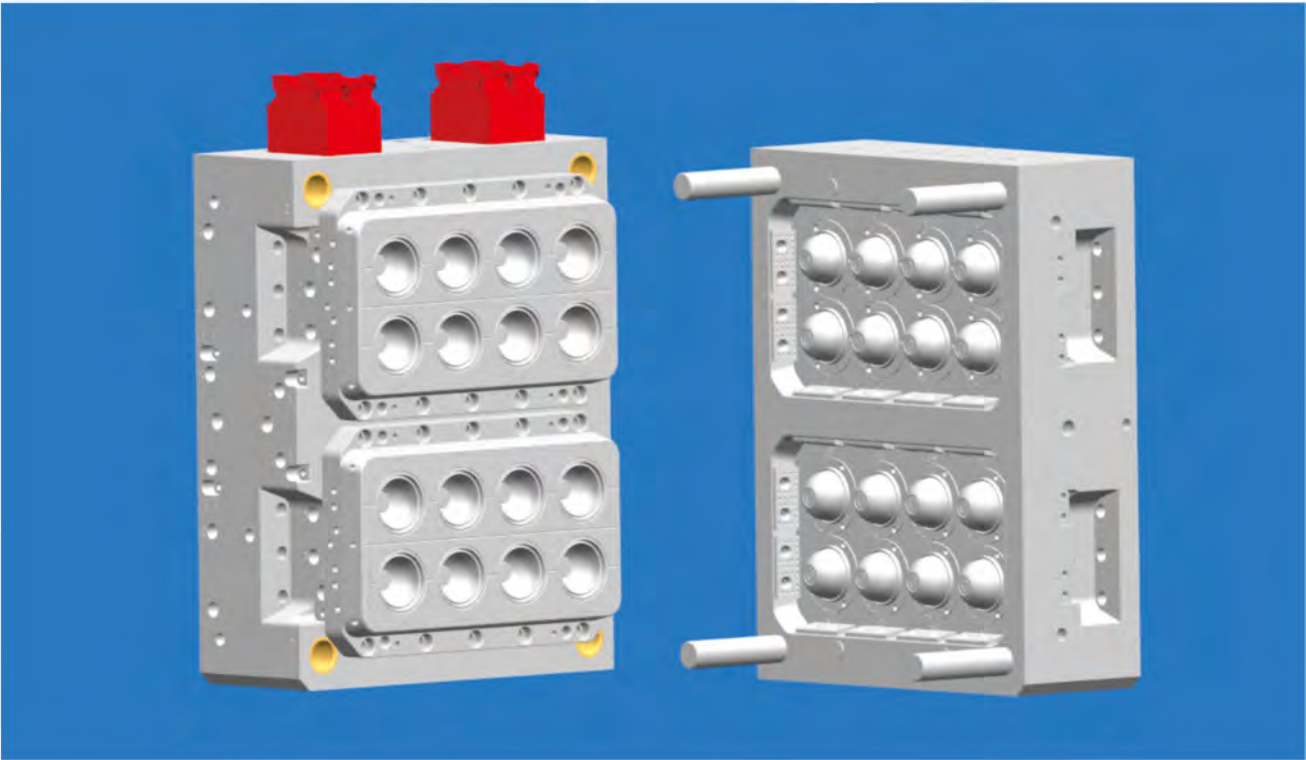
CAVITIES	成型腔数	6CAV
CYCLE TIME	成型周期	9.5S
MOULD SIZE	模具尺寸	650*1110*652
MACHINE SIZE	适配机型	400T
PP MELT TEMPERATURE	料筒温度	310℃
COOLING WATER TEMPERATURE	冷却水温	18-22℃
COOLING WATER PRESSURE	冷却水压	0.5-0.6Mpa

90口拱盖模具示意图

90 arched lid mould

Daily output: approximately 197,000 pieces per day, 24 hours per day.

日产量：约 197000 PCS （24小时/天计）



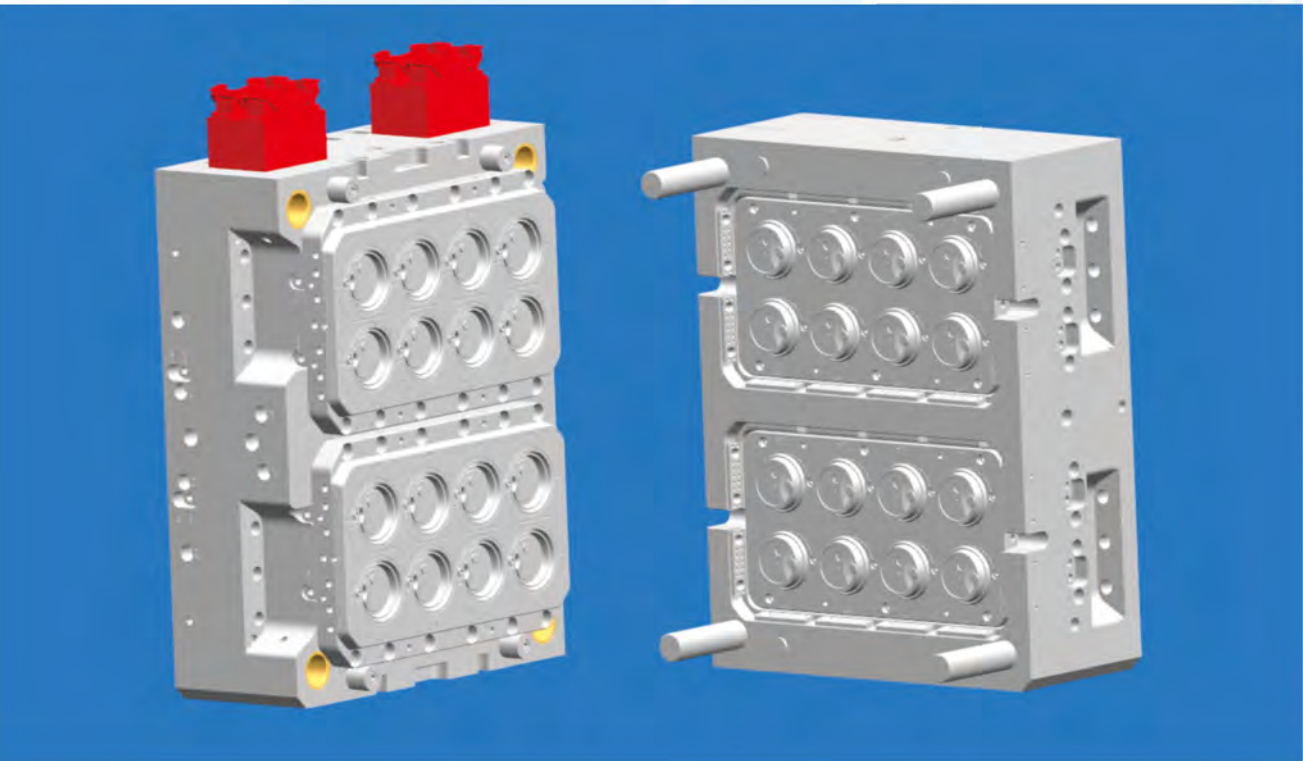
CAVITIES	成型腔数	16CAV
CYCLE TIME	成型周期	7S
MOULD SIZE	模具尺寸	650*850*530
MACHINE SIZE	适配机型	420T
PP MELT TEMPERATURE	料筒温度	310℃
COOLING WATER TEMPERATURE	冷却水温	18-22℃
COOLING WATER PRESSURE	冷却水压	0.5-0.6Mpa

90口连线盖模具示意图

90 lid with stopper mould

Daily output: approximately 212,000 pieces per day, 24 hours per day.

日产量：约 212000 PCS （24小时/天计）



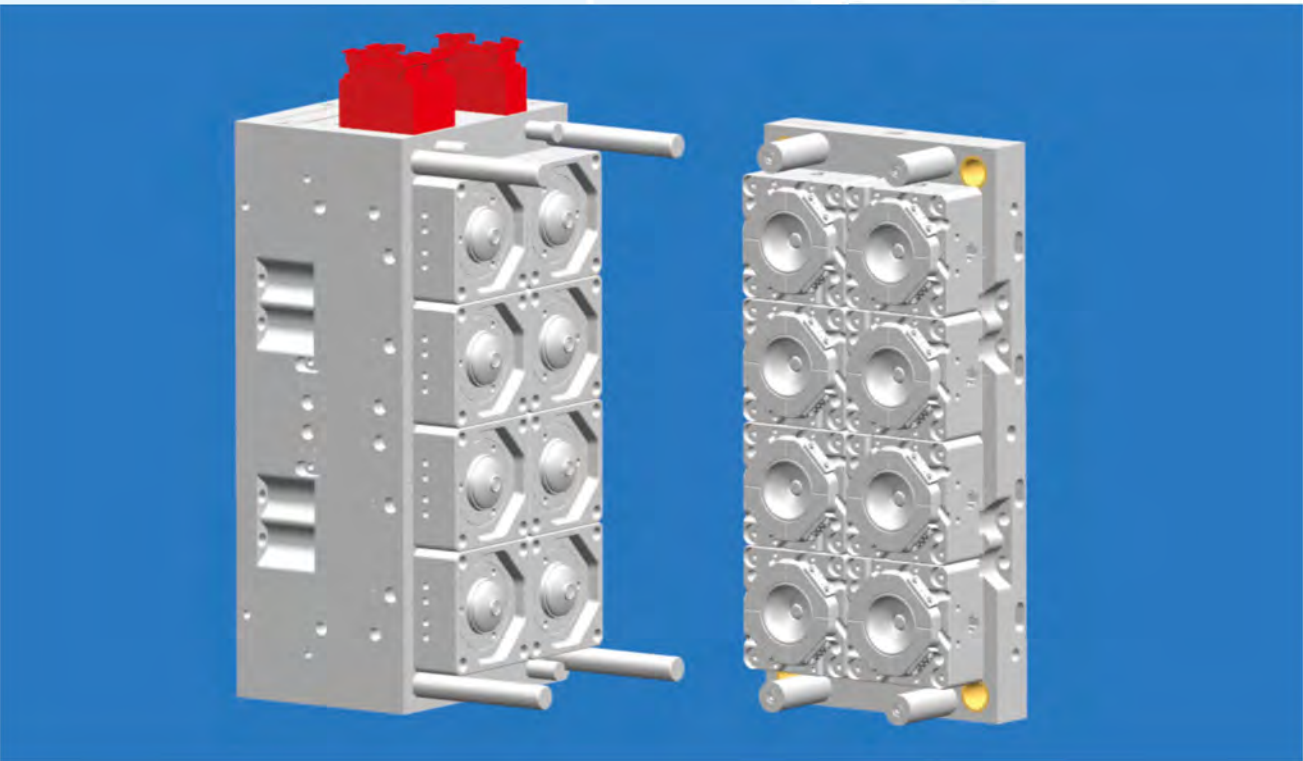
CAVITIES	成型腔数	16CAV
CYCLE TIME	成型周期	6.5S
MOULD SIZE	模具尺寸	630*820*550
MACHINE SIZE	适配机型	420T
PP MELT TEMPERATURE	料筒温度	310℃
COOLING WATER TEMPERATURE	冷却水温	18-22℃
COOLING WATER PRESSURE	冷却水压	0.5-0.6Mpa

90口茶壶盖模具示意图

90 teapot lid mould

Daily output: approximately 62,800 pieces per day, 24 hours per day.

日产量：约 62800 PCS （24小时/天计）



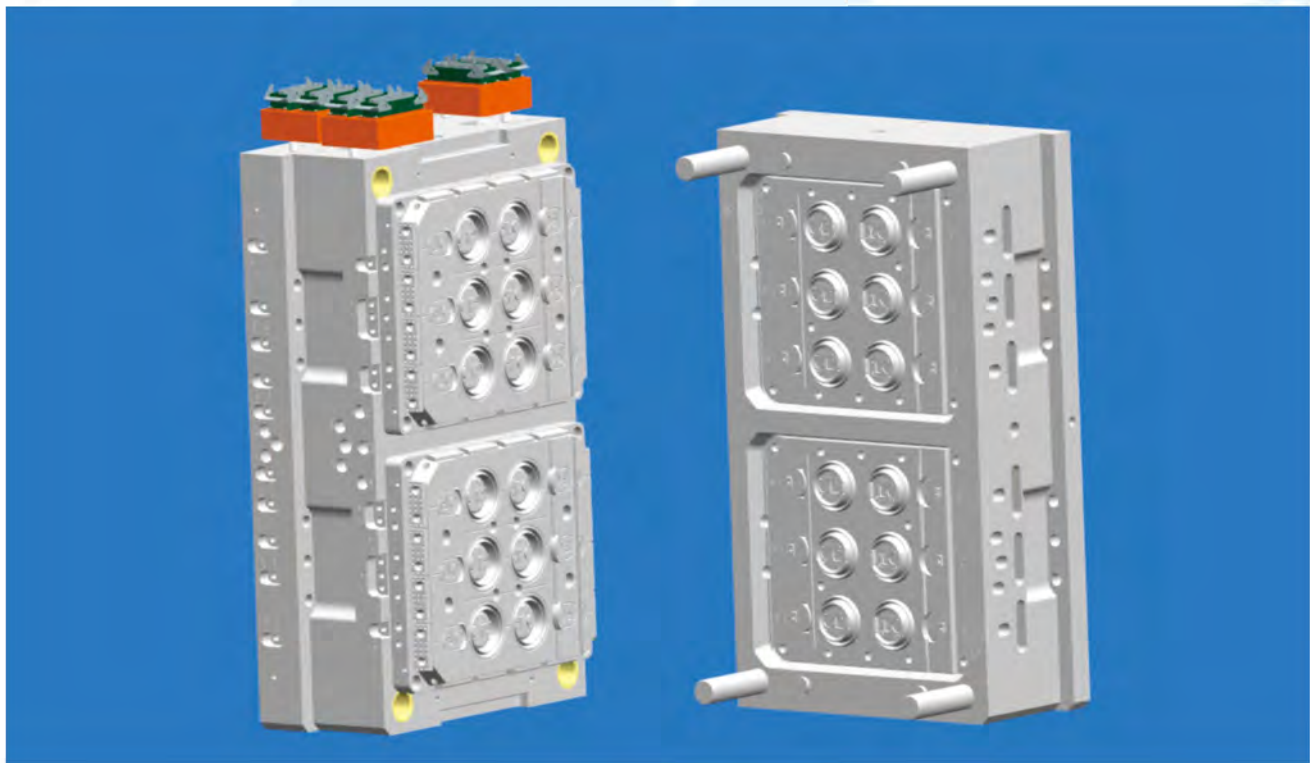
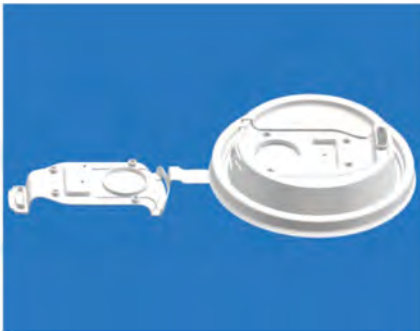
CAVITIES	成型腔数	8CAV
CYCLE TIME	成型周期	11S
MOULD SIZE	模具尺寸	450*930*588
MACHINE SIZE	适配机型	368T
PP MELT TEMPERATURE	料筒温度	310℃
COOLING WATER TEMPERATURE	冷却水温	18-22℃
COOLING WATER PRESSURE	冷却水压	0.5-0.6Mpa

90口多功能连线盖模具示意图

90 lid with multi function stopper

Daily output: approximately 115,000 pieces per day, 24 hours per day.

日产量：约 115000 PCS （24小时/天计）



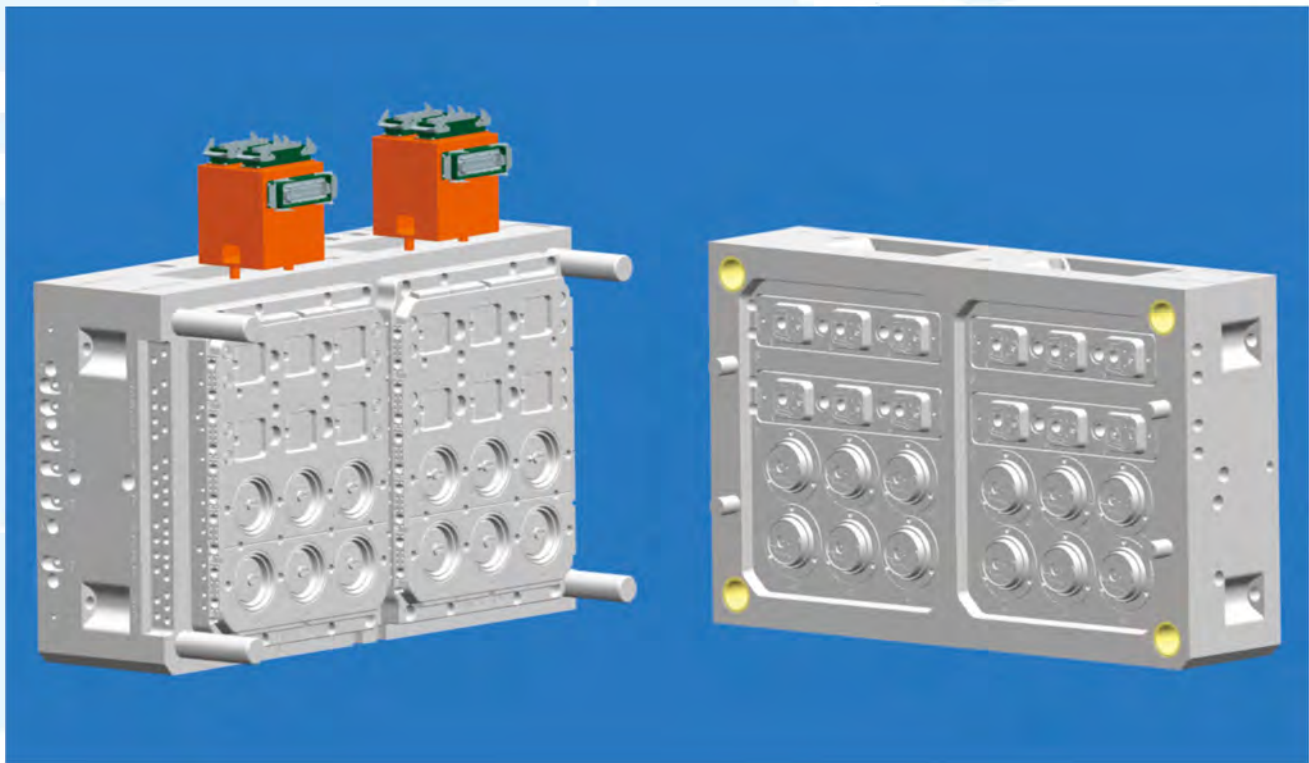
CAVITIES	成型腔数	12CAV
CYCLE TIME	成型周期	9S
MOULD SIZE	模具尺寸	620*1025*540
MACHINE SIZE	适配机型	420T
PP MELT TEMPERATURE	料筒温度	310℃
COOLING WATER TEMPERATURE	冷却水温	18-22℃
COOLING WATER PRESSURE	冷却水压	0.5-0.6Mpa

90口多功能分体盖模具示意图

90 lid plus multi function stopper

Daily output: approximately 115,000 pieces per day, 24 hours per day.

日产量：约 115000 PCS （24小时/天计）



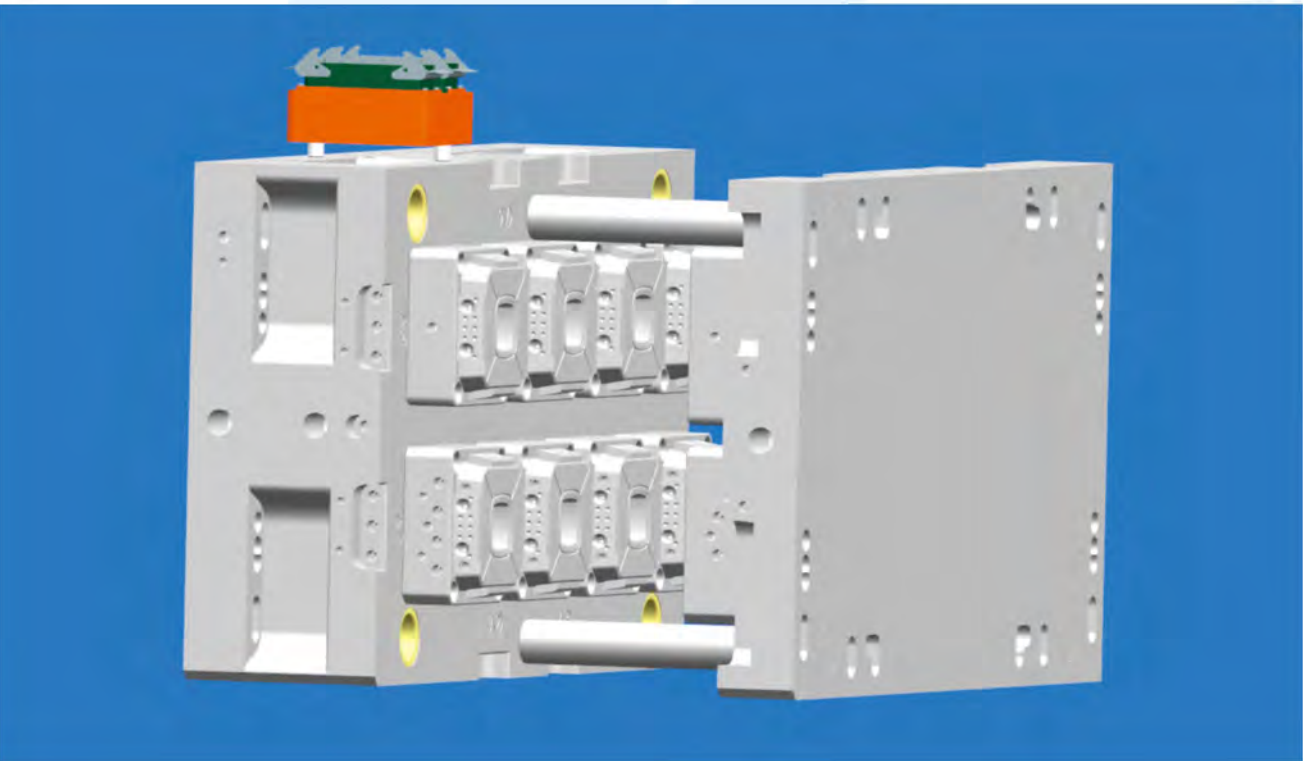
CAVITIES	成型腔数	12CAV
CYCLE TIME	成型周期	9S
MOULD SIZE	模具尺寸	630*1020*540
MACHINE SIZE	适配机型	420T
PP MELT TEMPERATURE	料筒温度	310℃
COOLING WATER TEMPERATURE	冷却水温	18-22℃
COOLING WATER PRESSURE	冷却水压	0.5-0.6Mpa

56ML酸奶杯模具示意图

56ml yogurt cup

Daily output: approximately 92,000 pieces per day, 24 hours per day.

日产量：约 92000 PCS （24小时/天计）



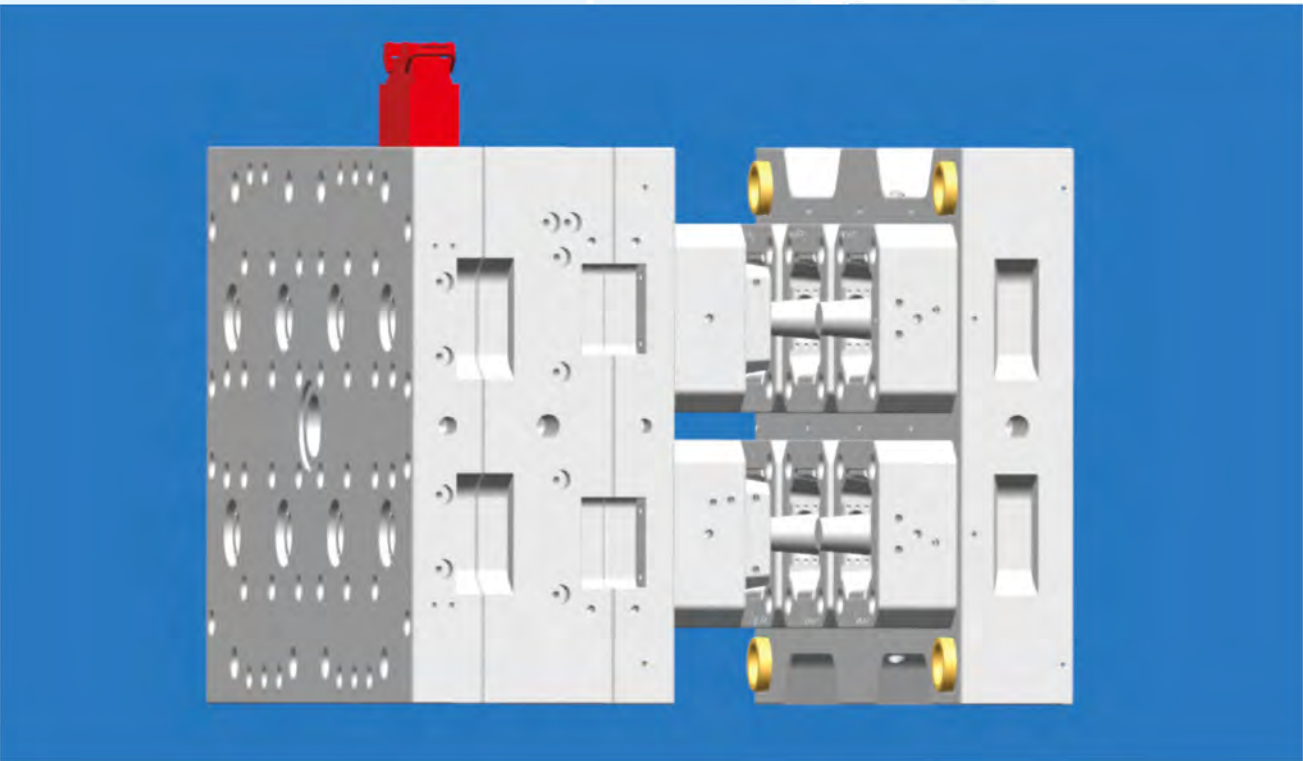
CAVITIES	成型腔数	8CAV
CYCLE TIME	成型周期	7.5S
MOULD SIZE	模具尺寸	520*900*395
MACHINE SIZE	适配机型	400T
PP MELT TEMPERATURE	料筒温度	310℃
COOLING WATER TEMPERATURE	冷却水温	18-22℃
COOLING WATER PRESSURE	冷却水压	0.5-0.6Mpa

120ML酸奶杯模具示意图

120ml yogurt cup

Daily output: approximately 92,000 pieces per day, 24 hours per day.

日产量：约 92000 PCS （24小时/天计）



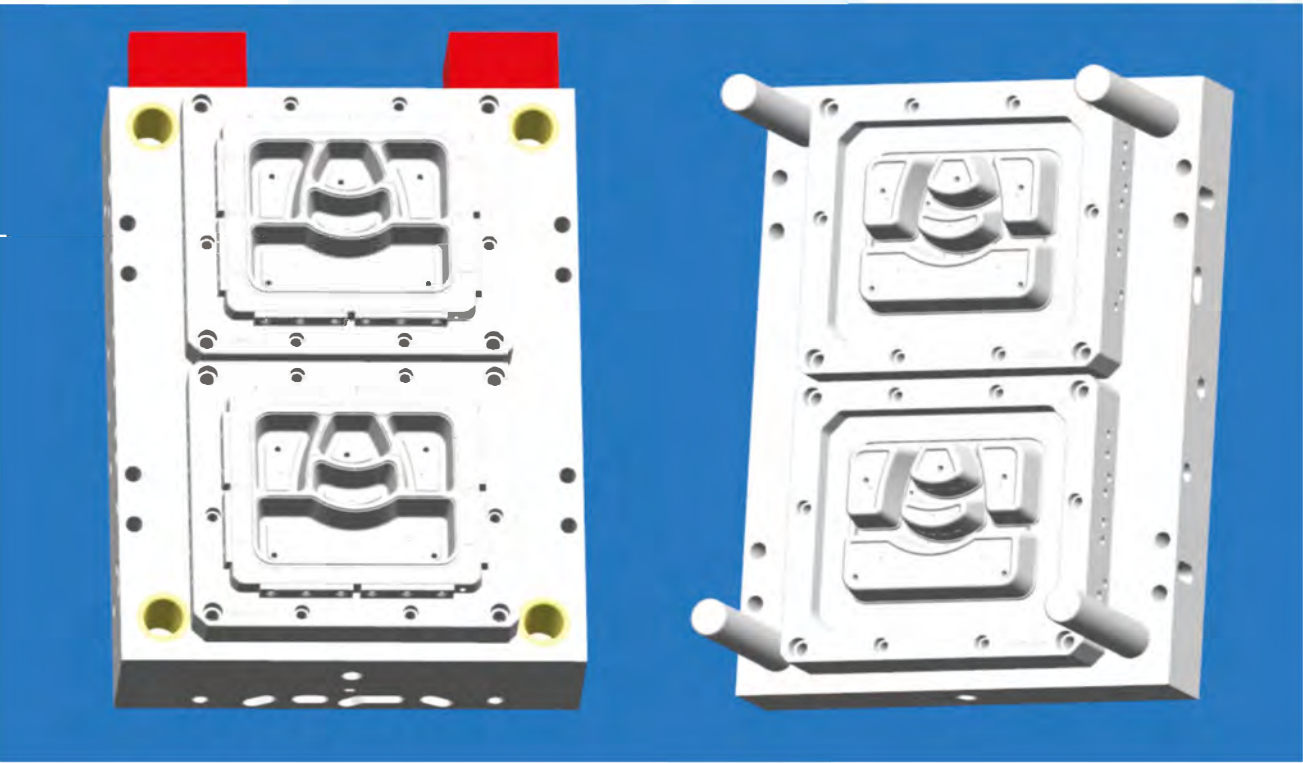
CAVITIES	成型腔数	8CAV
CYCLE TIME	成型周期	7.5S
MOULD SIZE	模具尺寸	620*960*600
MACHINE SIZE	适配机型	400T
PP MELT TEMPERATURE	料筒温度	310℃
COOLING WATER TEMPERATURE	冷却水温	18-22℃
COOLING WATER PRESSURE	冷却水压	0.5-0.6Mpa

五格餐盒模具示意图

5 slot food plate

Daily output: approximately 28,800 pieces per day, 24 hours per day.

日产量：约 28800 PCS （24小时/天计）



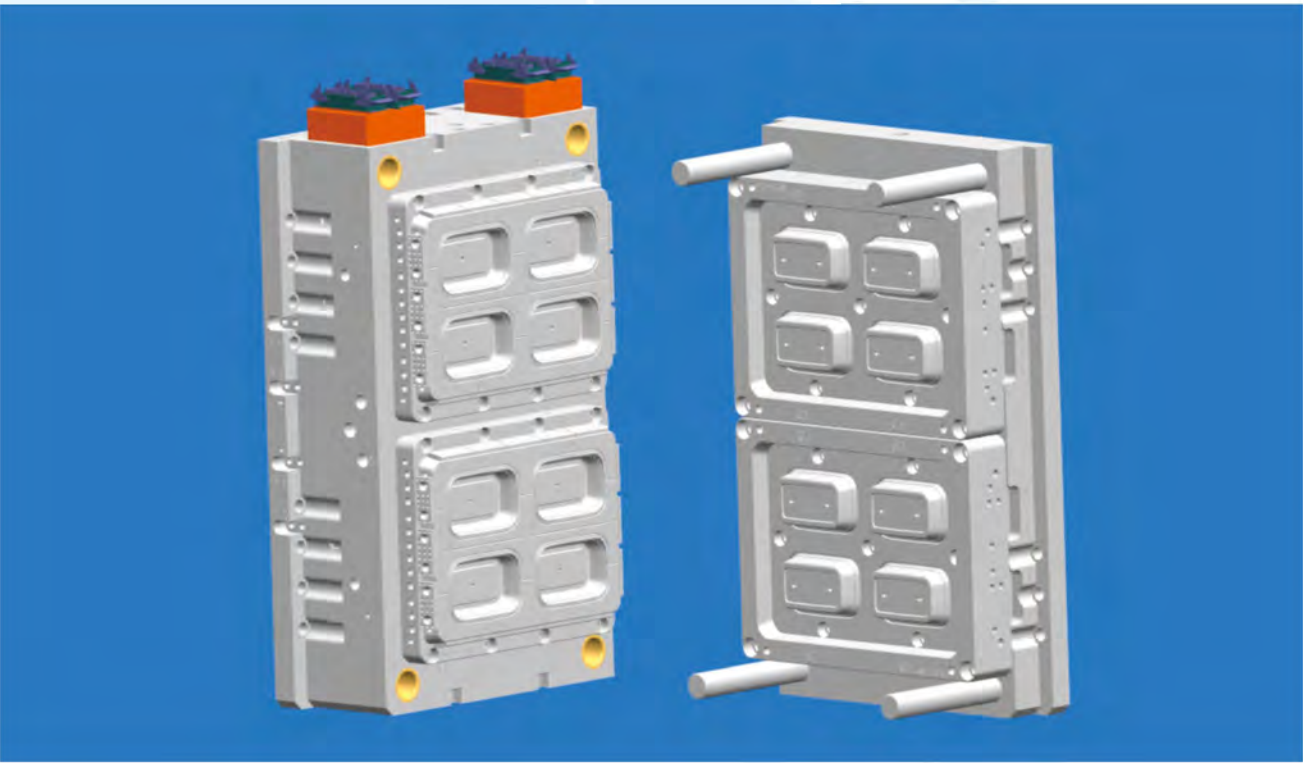
CAVITIES	成型腔数	2CAV
CYCLE TIME	成型周期	6S
MOULD SIZE	模具尺寸	600*800*405
MACHINE SIZE	适配机型	368T
PP MELT TEMPERATURE	料筒温度	310℃
COOLING WATER TEMPERATURE	冷却水温	18-22℃
COOLING WATER PRESSURE	冷却水压	0.5-0.6Mpa

500ML方盒模具示意图

500ml food container

Daily output: approximately 115,000 pieces per day, 24 hours per day.

日产量：约 115000 PCS （24小时/天计）



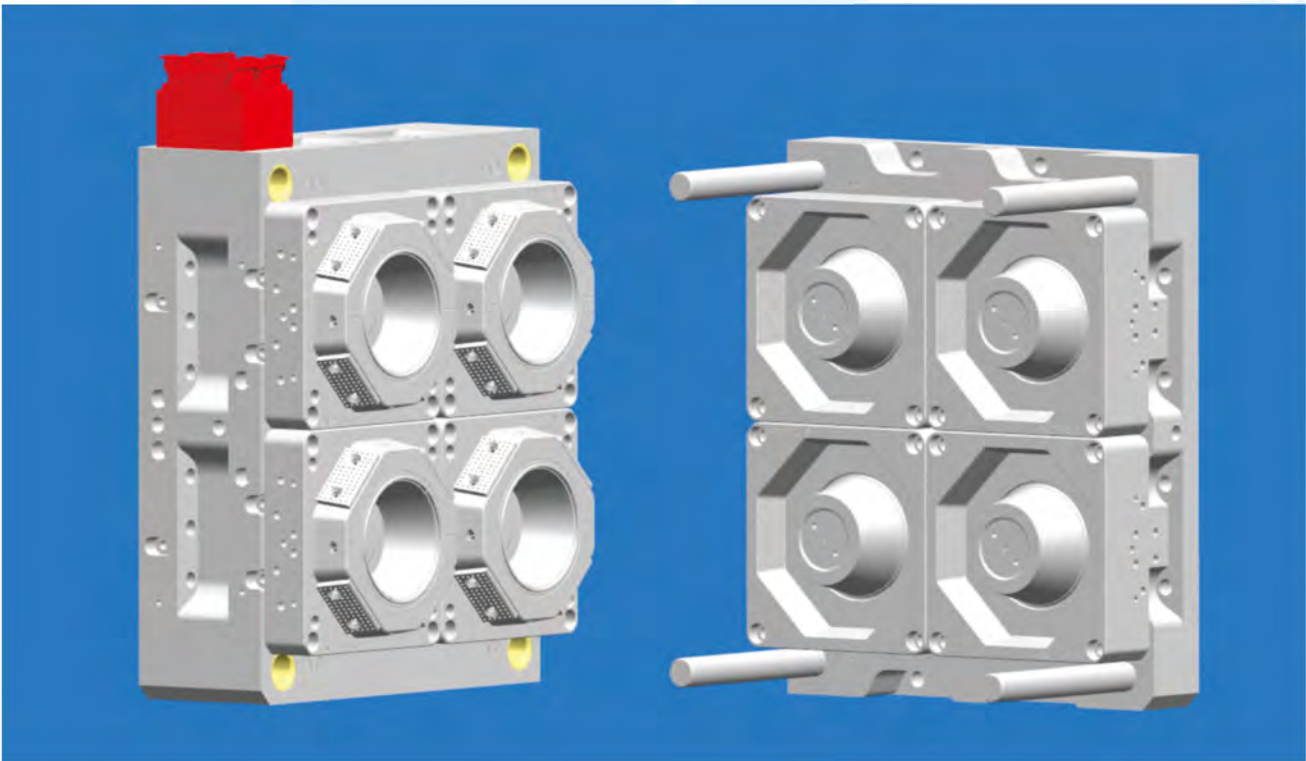
CAVITIES	成型腔数	8CAV
CYCLE TIME	成型周期	6S
MOULD SIZE	模具尺寸	610*975*465
MACHINE SIZE	适配机型	420T
PP MELT TEMPERATURE	料筒温度	310℃
COOLING WATER TEMPERATURE	冷却水温	18-22℃
COOLING WATER PRESSURE	冷却水压	0.5-0.6Mpa

1250ML圆碗模具示意图

1250ml bowl

Daily output: approximately 57,600 pieces per day, 24 hours per day.

日产量：约 57600 PCS （24小时/天计）



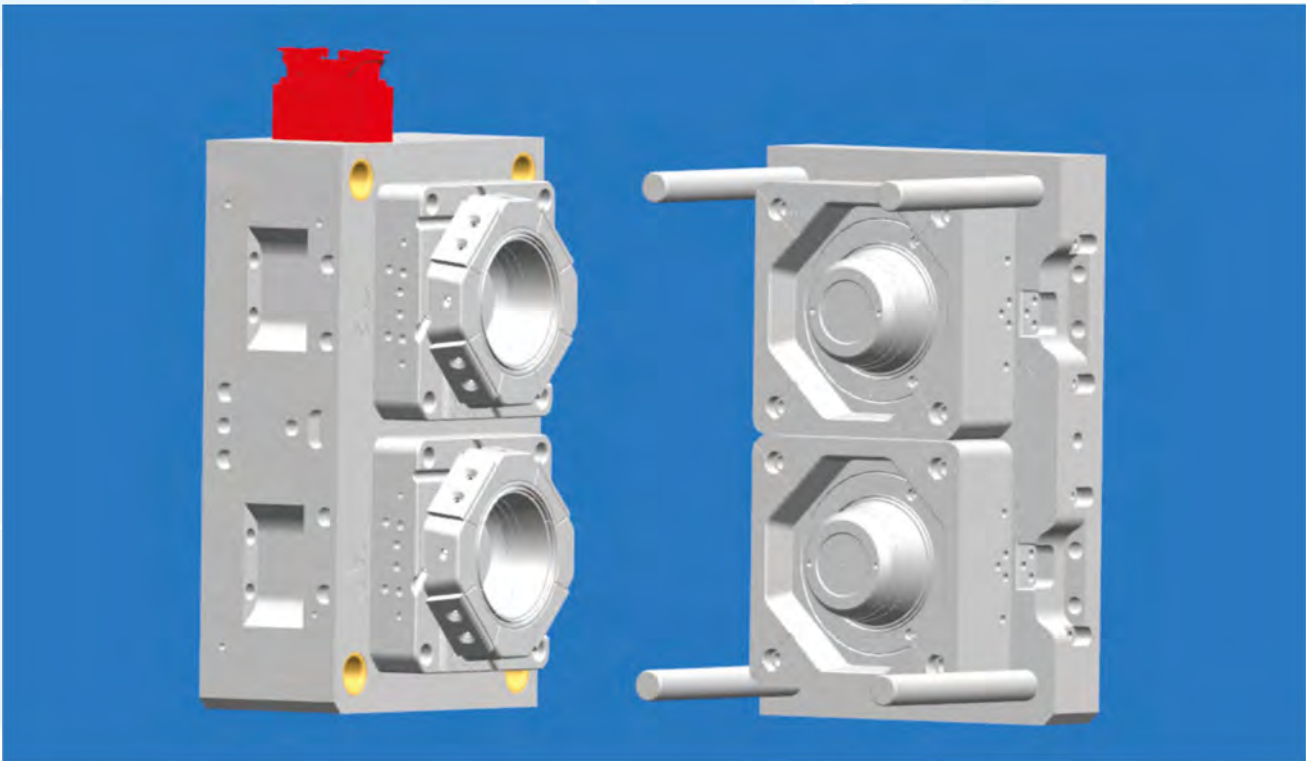
CAVITIES	成型腔数	4CAV
CYCLE TIME	成型周期	6S
MOULD SIZE	模具尺寸	620*745*477
MACHINE SIZE	适配机型	420T
PP MELT TEMPERATURE	料筒温度	310℃
COOLING WATER TEMPERATURE	冷却水温	18-22℃
COOLING WATER PRESSURE	冷却水压	0.5-0.6Mpa

1250锁扣碗模具示意图

1250ml bowl with locking clip

Daily output: approximately 21,600 pieces per day, 24 hours per day.

日产量：约 21600 PCS （24小时/天计）



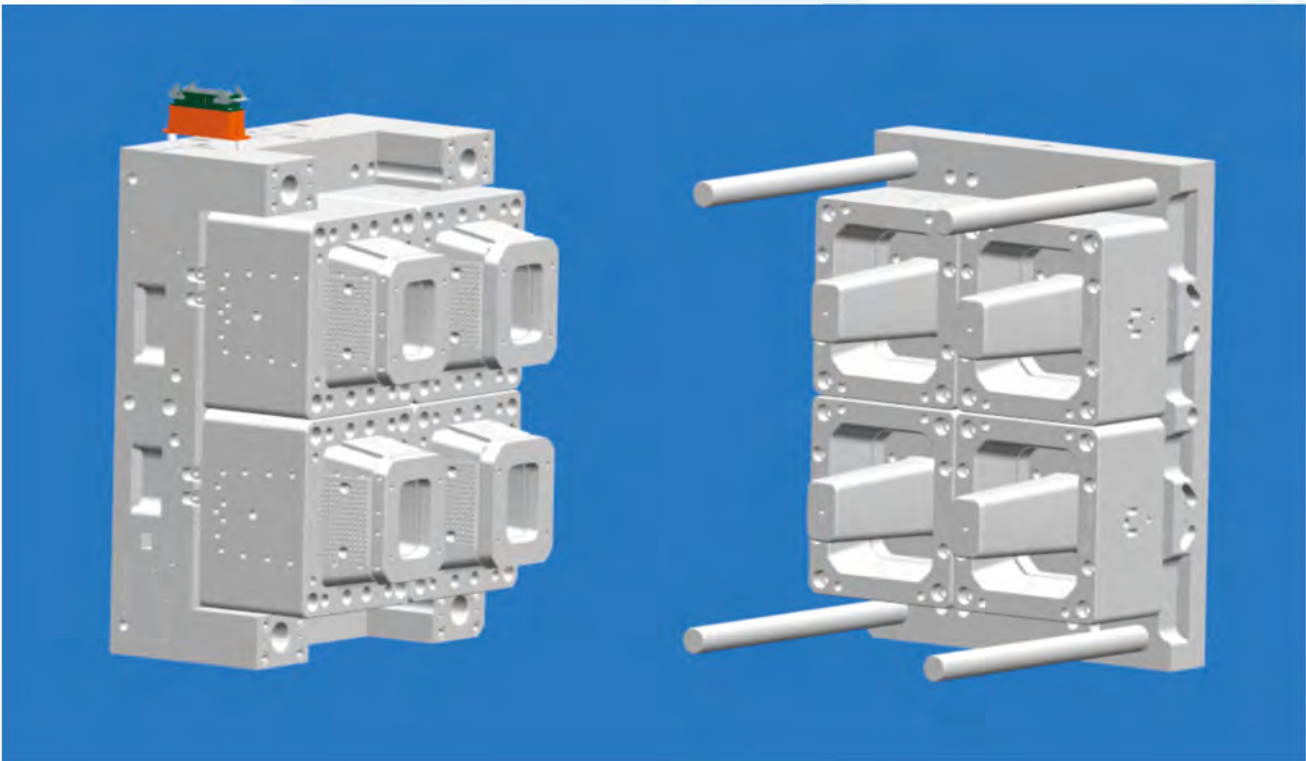
CAVITIES	成型腔数	2CAV
CYCLE TIME	成型周期	8S
MOULD SIZE	模具尺寸	450*720*498
MACHINE SIZE	适配机型	300T
PP MELT TEMPERATURE	料筒温度	310℃
COOLING WATER TEMPERATURE	冷却水温	18-22℃
COOLING WATER PRESSURE	冷却水压	0.5-0.6Mpa

冷藏密封盒模具示意图

sealed container for refrigeration

Daily output: approximately 9,874 pieces per day, 24 hours per day.

日产量：约 9874 PCS （24小时/天计）



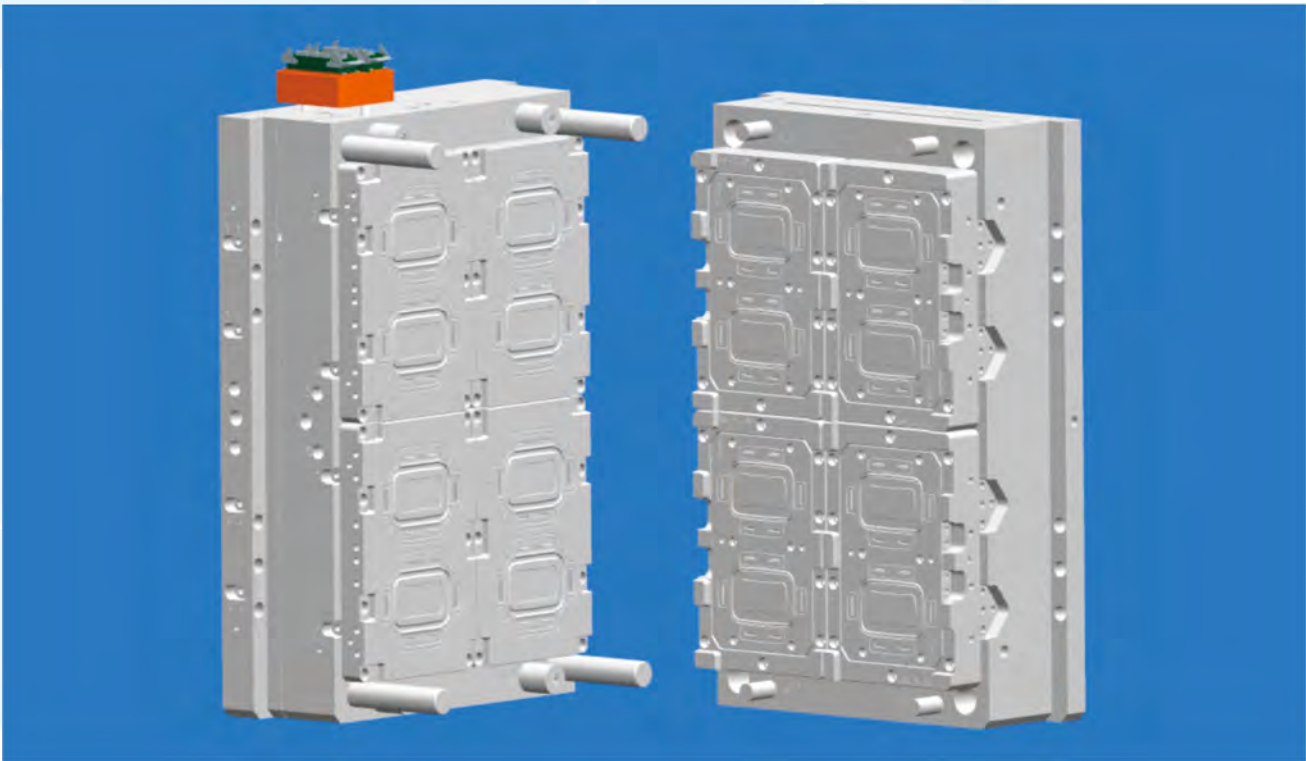
CAVITIES	成型腔数	4CAV
CYCLE TIME	成型周期	35S
MOULD SIZE	模具尺寸	700*940*734
MACHINE SIZE	适配机型	400T
PP MELT TEMPERATURE	料筒温度	310℃
COOLING WATER TEMPERATURE	冷却水温	18-22℃
COOLING WATER PRESSURE	冷却水压	0.5-0.6Mpa

冷藏密封盒盖模具示意图

sealed lid for refrigeration

Daily output: approximately 23,040 pieces per day, 24 hours per day.

日产量：约 23040 PCS （24小时/天计）



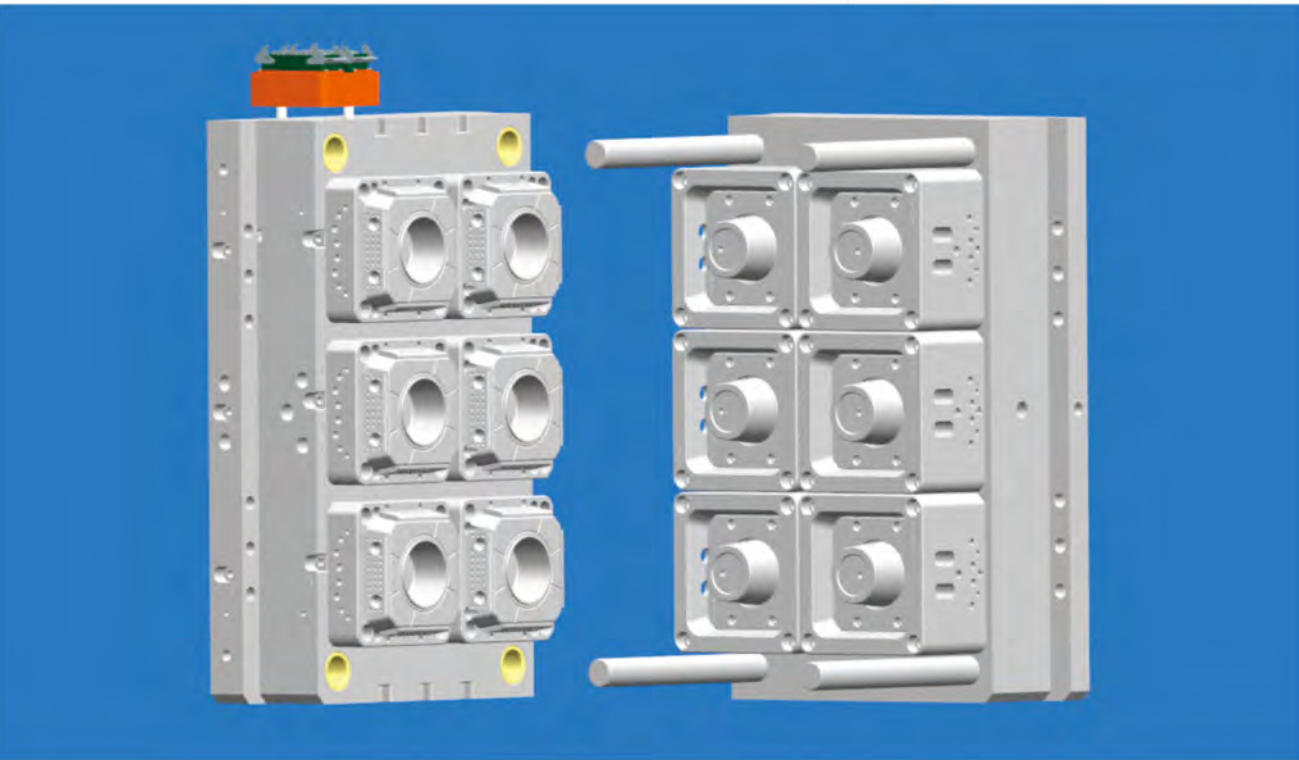
CAVITIES	成型腔数	8CAV
CYCLE TIME	成型周期	30S
MOULD SIZE	模具尺寸	450*720*498
MACHINE SIZE	适配机型	400T
PP MELT TEMPERATURE	料筒温度	310℃
COOLING WATER TEMPERATURE	冷却水温	18-22℃
COOLING WATER PRESSURE	冷却水压	0.5-0.6Mpa

500ML螺纹口汤碗模具示意图

500ml bowl with screw top

Daily output: approximately 115,000 pieces per day, 24 hours per day.

日产量：约 60900 PCS （24小时/天计）



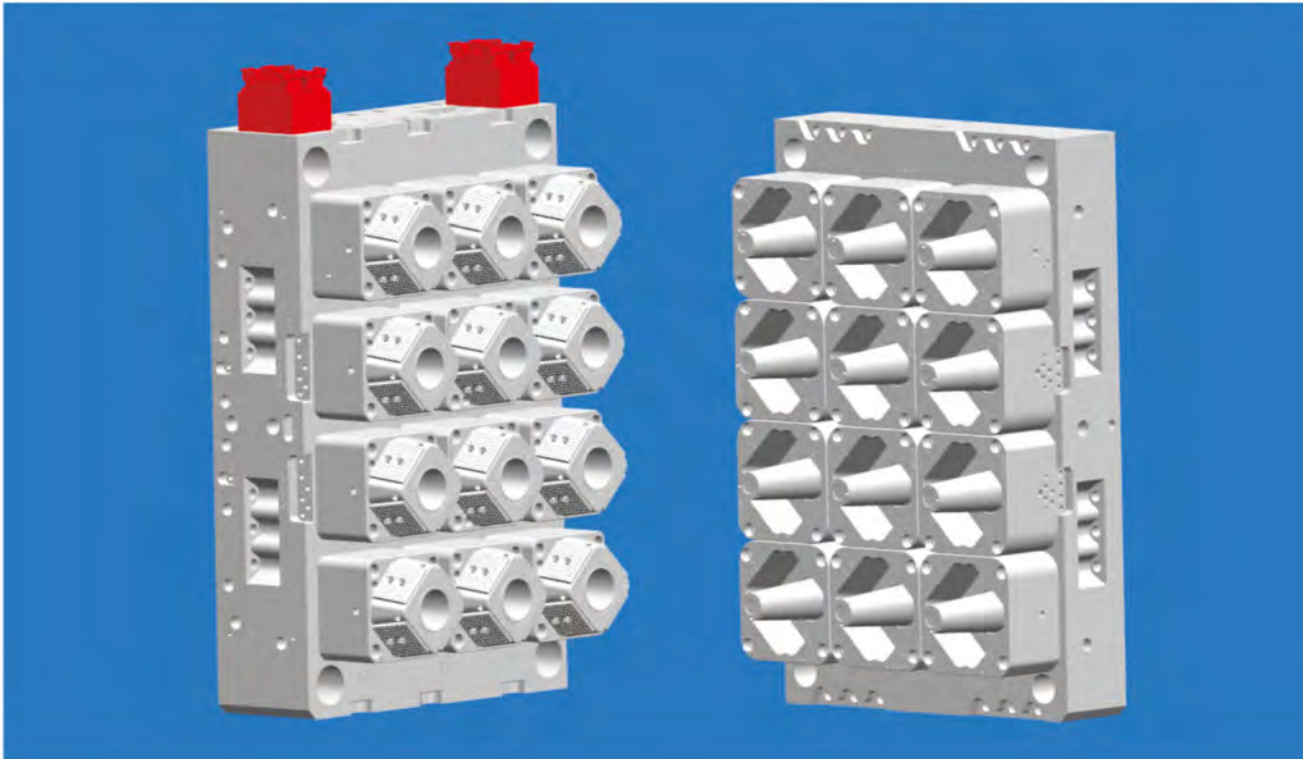
CAVITIES	成型腔数	6CAV
CYCLE TIME	成型周期	8.5S
MOULD SIZE	模具尺寸	600*900*580
MACHINE SIZE	适配机型	368T
PP MELT TEMPERATURE	料筒温度	310℃
COOLING WATER TEMPERATURE	冷却水温	18-22℃
COOLING WATER PRESSURE	冷却水压	0.5-0.6Mpa

90700奶茶杯模具示意图

90700 bubble tea cup

Daily output: approximately 129,600 pieces per day, 24 hours per day.

日产量：约 129600 PCS （24小时/天计）

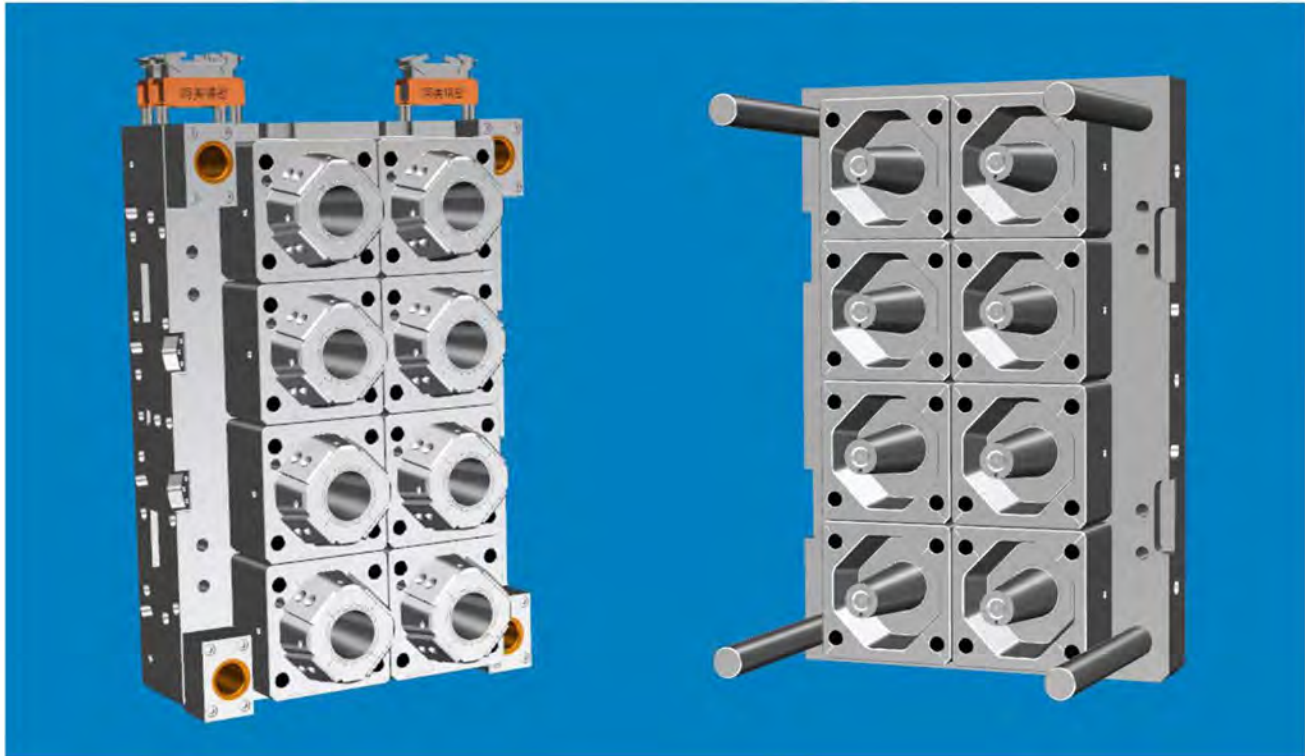


CAVITIES	成型腔数	12CAV
CYCLE TIME	成型周期	8S
MOULD SIZE	模具尺寸	720*1100*625
MACHINE SIZE	适配机型	480T
PP MELT TEMPERATURE	料筒温度	310℃
COOLING WATER TEMPERATURE	冷却水温	18-22℃
COOLING WATER PRESSURE	冷却水压	0.5-0.6Mpa

90700 CUP MOULD

(8 CAVITIES SAMPLE)

Daily output: approximately 90,000 pieces per day, 24 hours per day.

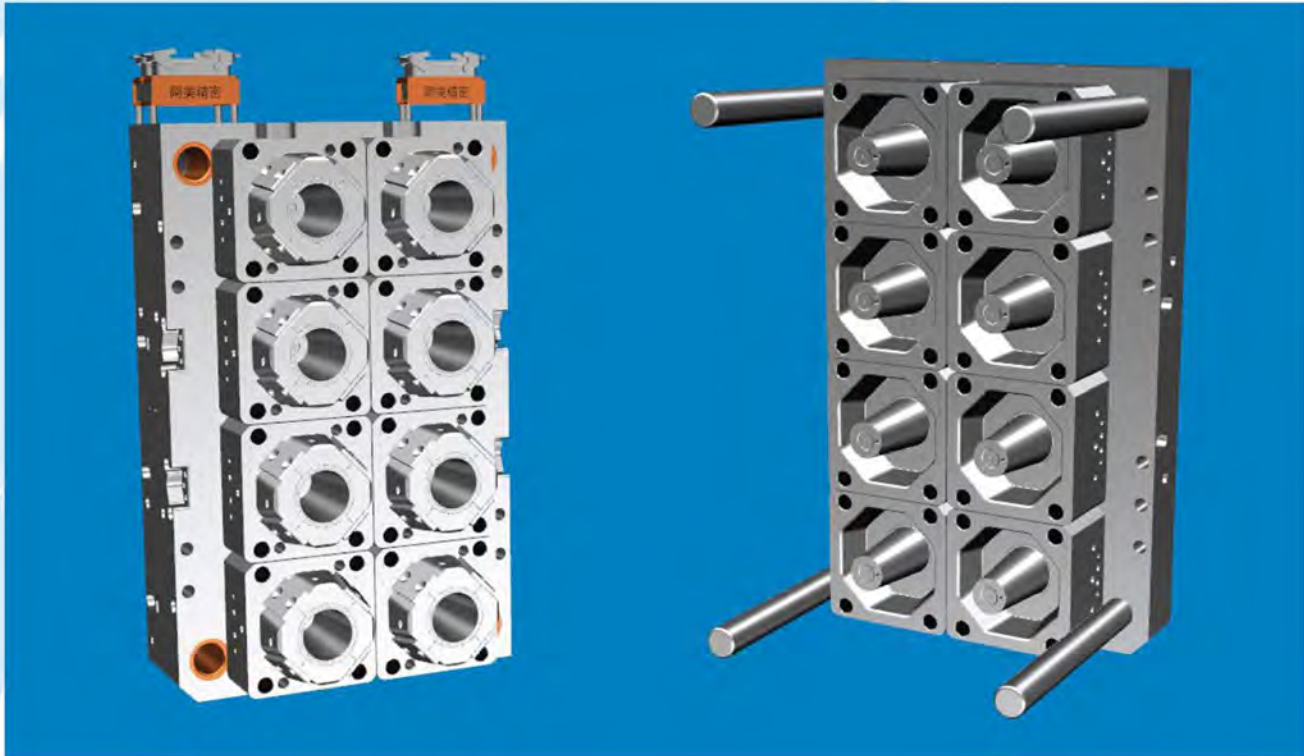


CAVITIES	8CAV
CYCLE TIME	7.6S
MOULD SIZE	650X980X560
MACHINE SIZE	400T~420T
PP MELT TEMPERATURE	310 ℃
COOLING WATER TEMPERATURE	16-20℃
COOLING WATER PRESSURE	0.5~0.6Mpa

90500 CUP MOULD

(8 CAVITIES SAMPLE)

Daily output: approximately 96,000 pieces per day, 24 hours per day.

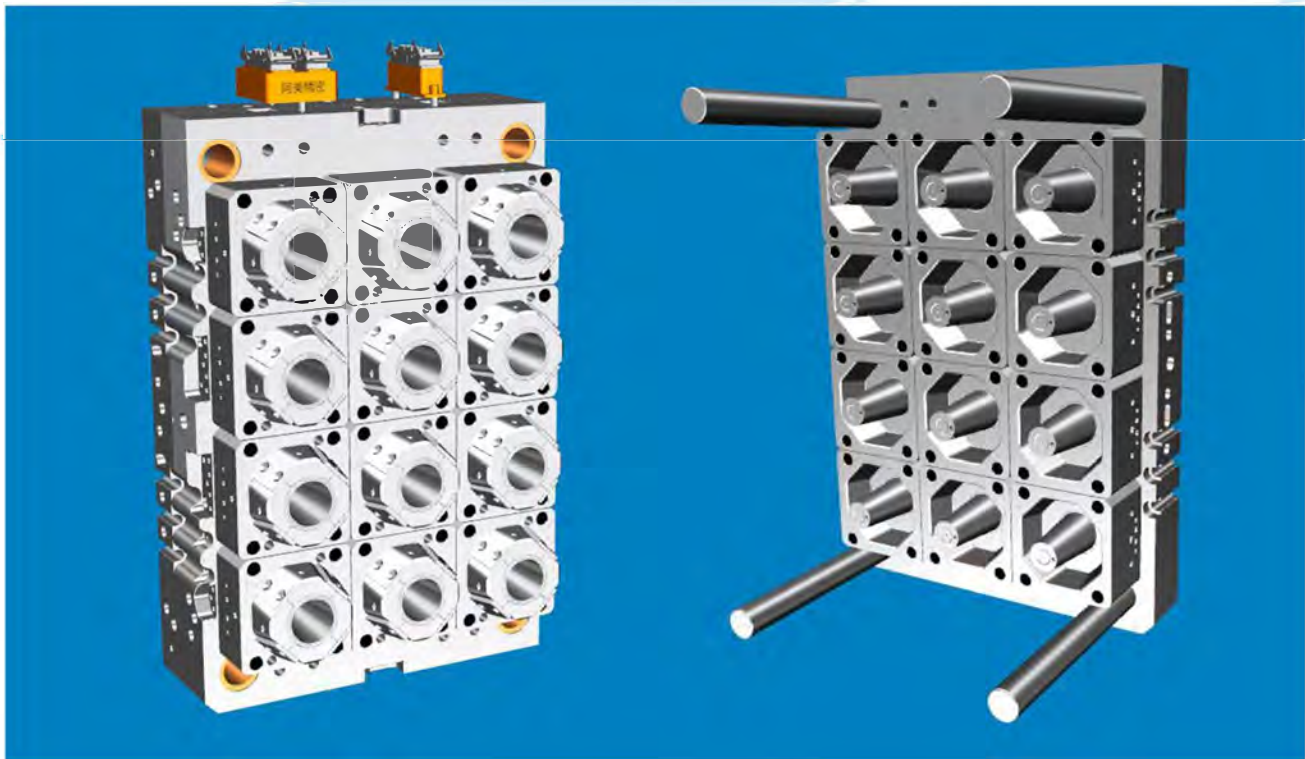


CAVITIES	8CAV
CYCLE TIME	7.2S
MOULD SIZE	600X930X520
MACHINE SIZE	360T~380T
PP MELT TEMPERATURE	300 ℃
COOLING WATER TEMPERATURE	16-20℃
COOLING WATER PRESSURE	0.5~0.6Mpa

90700 CUP MOULD

(12 CAVITIES SAMPLE)

Daily output: approximately 129,000 pieces per day, 24 hours per day.



CAVITIES	12CAV
CYCLE TIME	8S
MOULD SIZE	720X1100X625
MACHINE SIZE	480T
PP MELT TEMPERATURE	330 °C
COOLING WATER TEMPERATURE	16-20°C
COOLING WATER PRESSURE	0.5~0.6Mpa

90500 CUP MOULD

(12 CAVITIES SAMPLE)

Daily output: approximately 138,000 pieces per day, 24 hours per day.



CAVITIES	12CAV
CYCLE TIME	7.5S
MOULD SIZE	720X1100X580
MACHINE SIZE	480T
PP MELT TEMPERATURE	320 °C
COOLING WATER TEMPERATURE	16-20°C
COOLING WATER PRESSURE	0.5~0.6Mpa

90700U CUP MOULD

(8 CAVITIES SAMPLE)

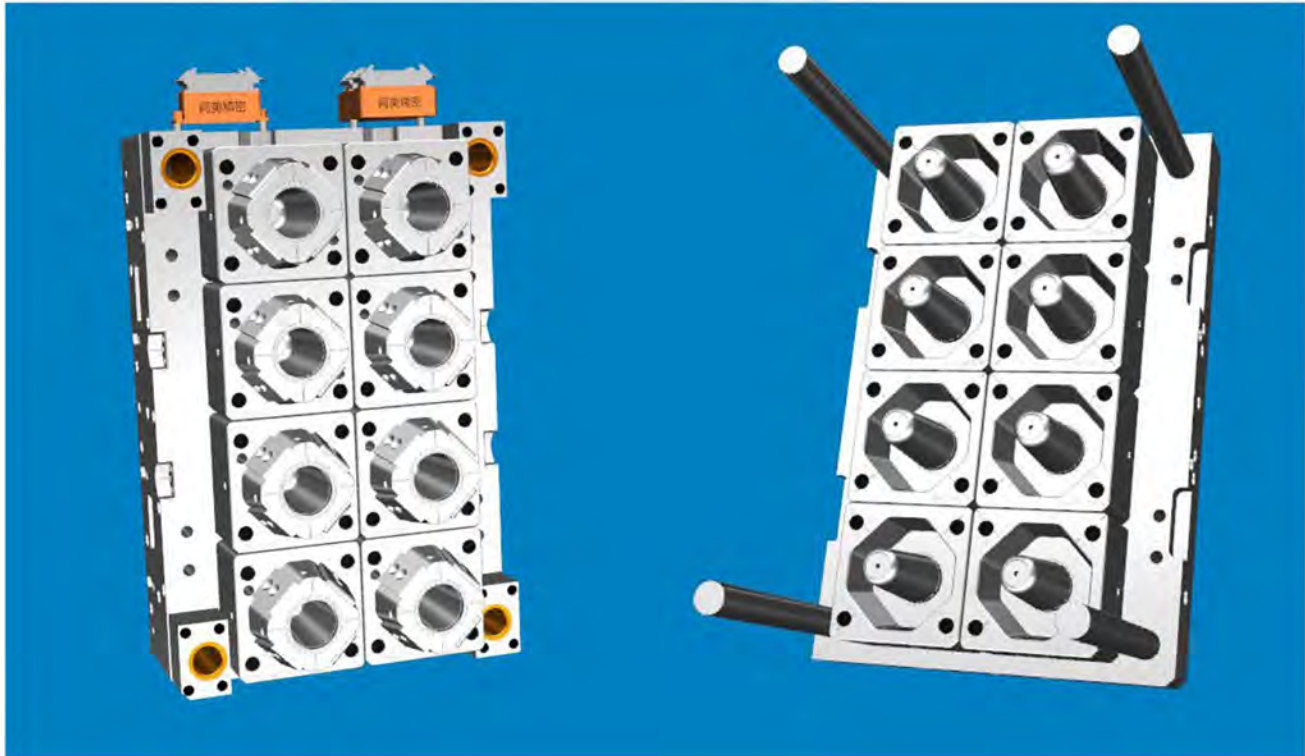
Daily output: approximately 90,000 pieces per day, 24 hours per day.



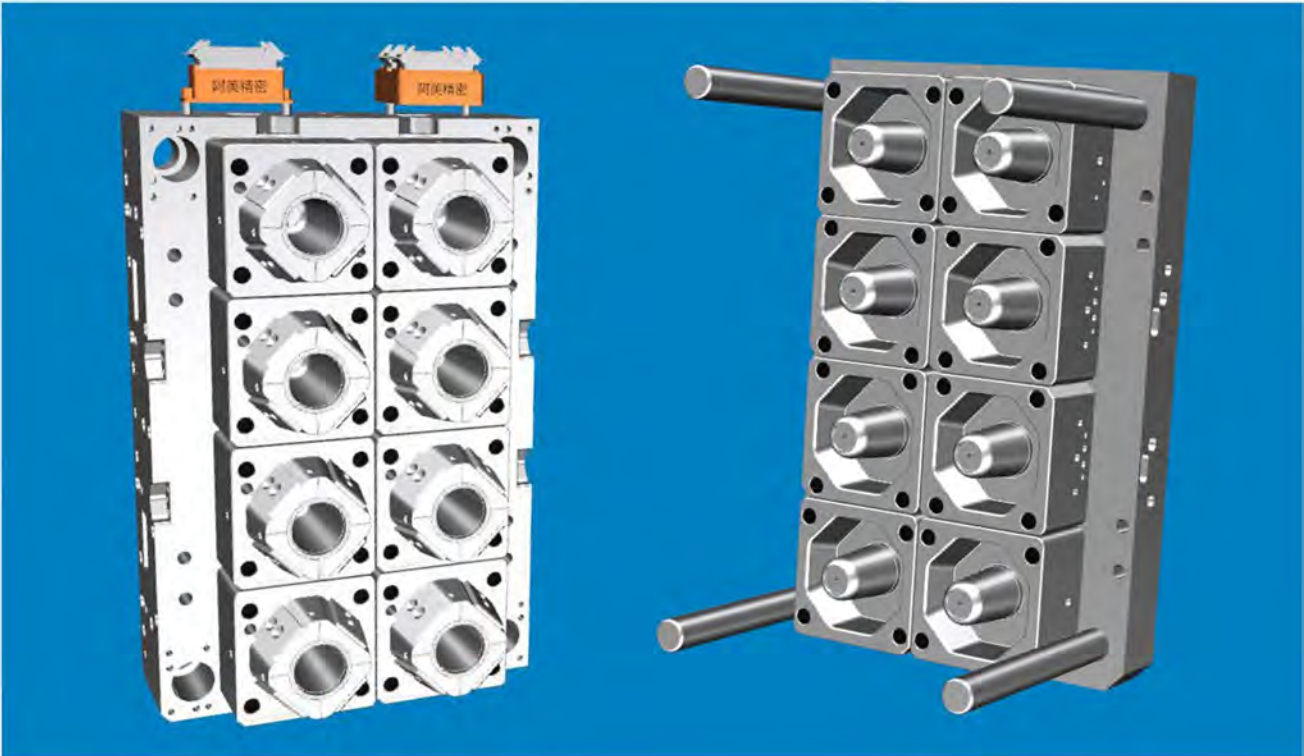
90500U CUP MOULD

(8 CAVITIES SAMPLE)

Daily output: approximately 96,000 pieces per day, 24 hours per day.



CAVITIES	8CAV
CYCLE TIME	7.6S
MOULD SIZE	650X980X560
MACHINE SIZE	400T~420T
PP MELT TEMPERATURE	310 ℃
COOLING WATER TEMPERATURE	16-20℃
COOLING WATER PRESSURE	0.5~0.6Mpa



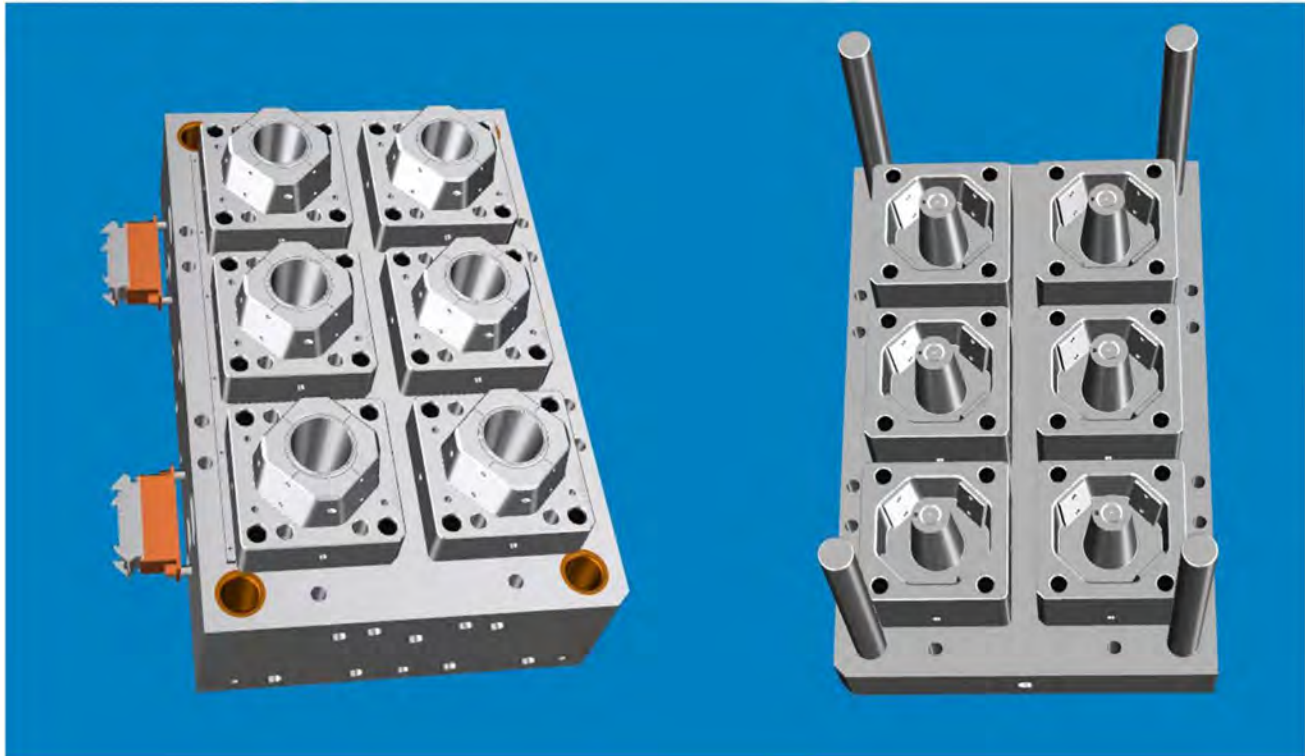
CAVITIES	8CAV
CYCLE TIME	7.2S
MOULD SIZE	600X930X505
MACHINE SIZE	360T~380T
PP MELT TEMPERATURE	300 ℃
COOLING WATER TEMPERATURE	16-20℃
COOLING WATER PRESSURE	0.5~0.6Mpa

90650 CUP MOULD

WITH IN MOULD LABLE

(6 CAVITIES SAMPLE)

Daily output: approximately 68,000 pieces per day, 24 hours per day.



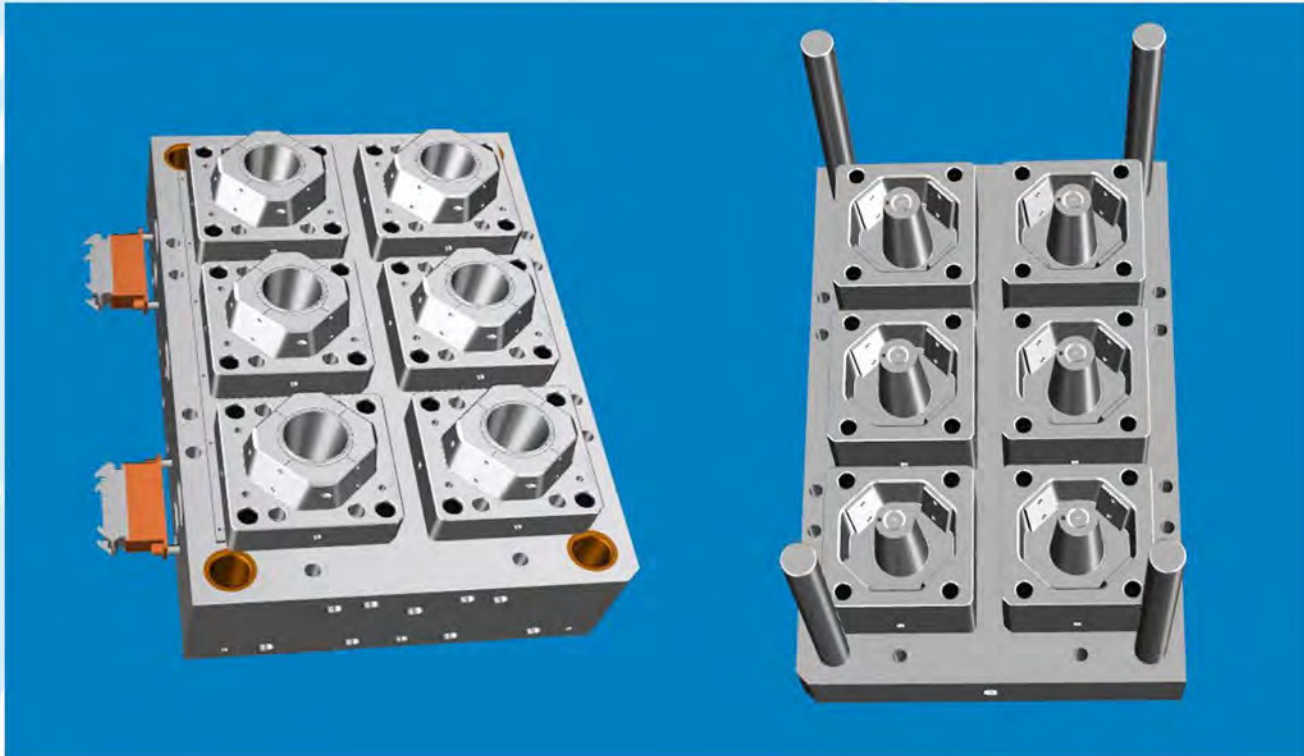
CAVITIES	6CAV
CYCLE TIME	7.6S
MOULD SIZE	980X600X555
MACHINE SIZE	360T
PP MELT TEMPERATURE	310 °C
COOLING WATER TEMPERATURE	16-20°C
COOLING WATER PRESSURE	0.5~0.6Mpa

90500 CUP MOULD

WITH IN MOULD LABLE

(6 CAVITIES SAMPLE)

Daily output: approximately 72,000 pieces per day, 24 hours per day.

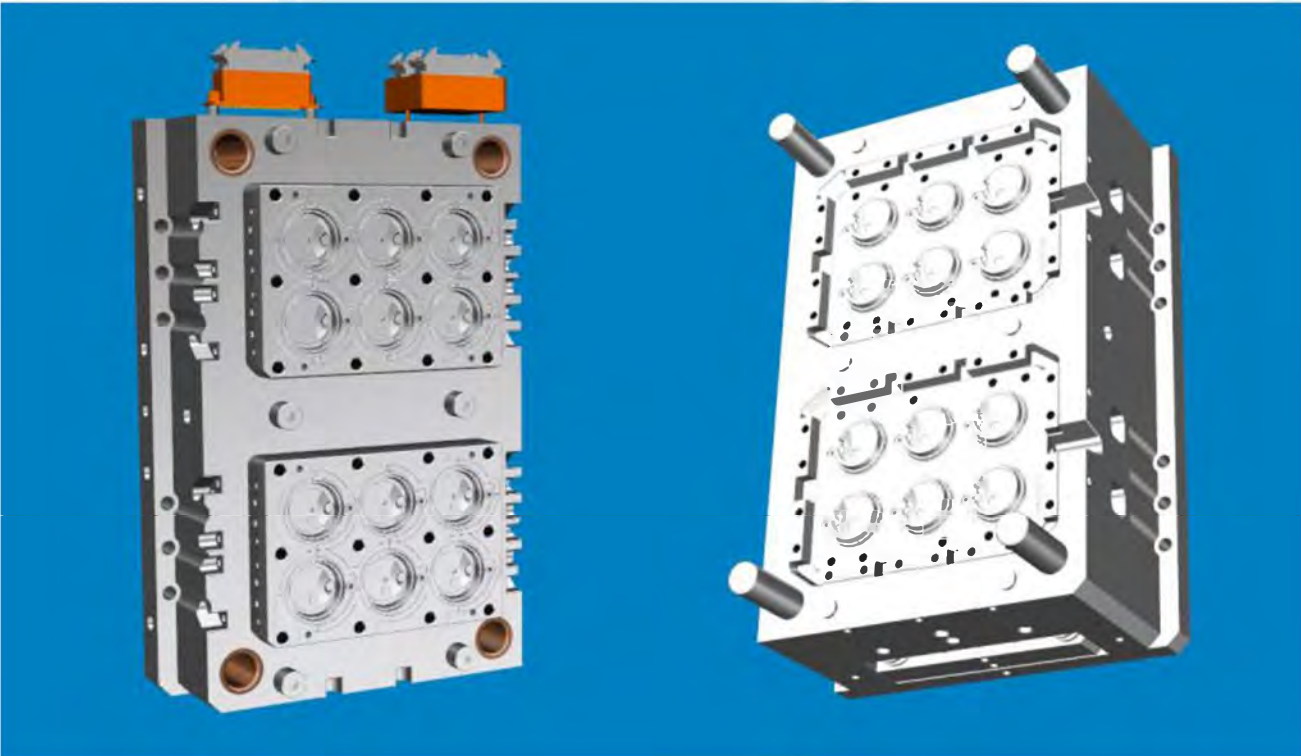
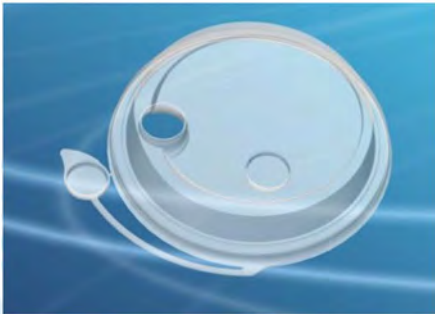


CAVITIES	6CAV
CYCLE TIME	7.2S
MOULD SIZE	980X600X555
MACHINE SIZE	360T
PP MELT TEMPERATURE	300 °C
COOLING WATER TEMPERATURE	16-20°C
COOLING WATER PRESSURE	0.5~0.6Mpa

90 SEAL LID MOULD

(12 CAVITIES SAMPLE)

Daily output: approximately 160,000 pieces per day, 24 hours per day.

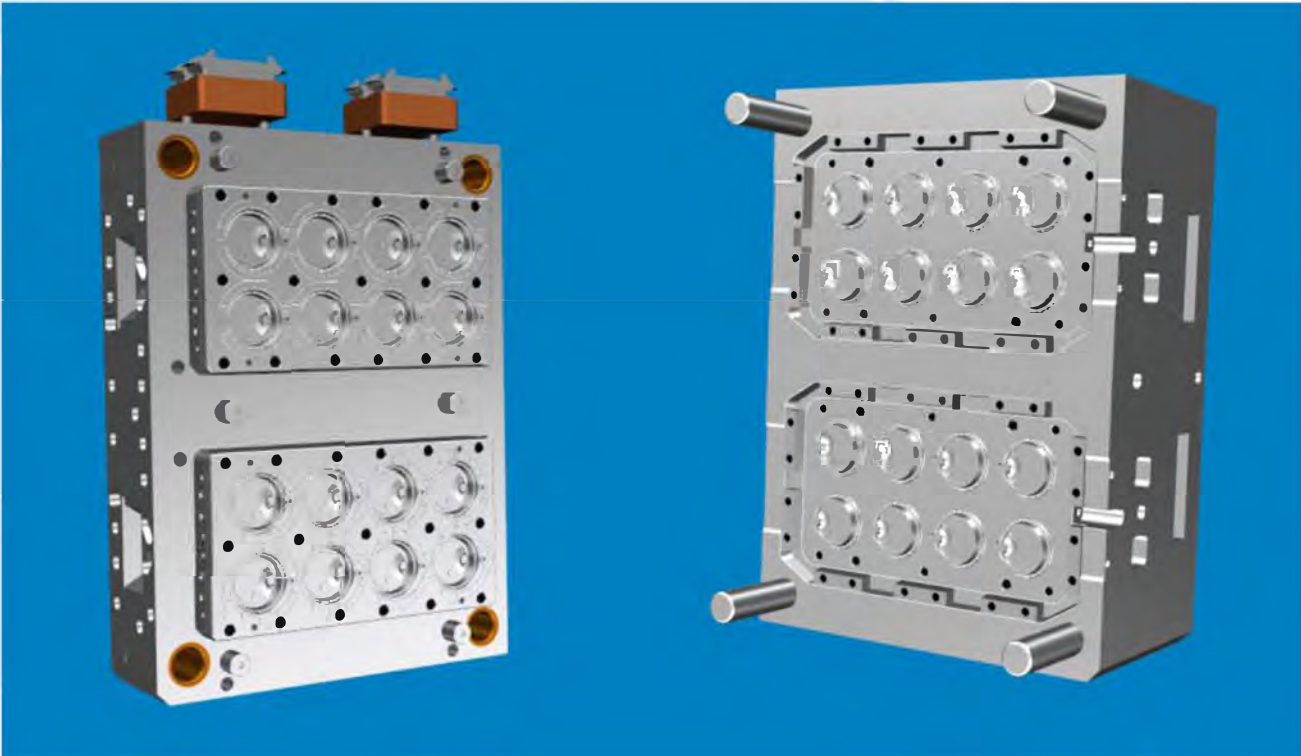
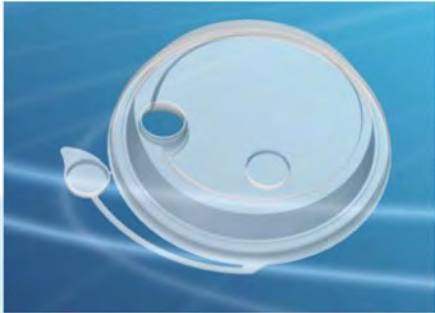


CAVITIES	12CAV
CYCLE TIME	6.5S
MOULD SIZE	600X880X545
MACHINE SIZE	350T~380T
PP MELT TEMPERATURE	300 °C
COOLING WATER TEMPERATURE	16-20°C
COOLING WATER PRESSURE	0.5~0.6Mpa

90 SEAL LID MOULD

(16 CAVITIES SAMPLE)

Daily output: approximately 210,000 pieces per day, 24 hours per day.

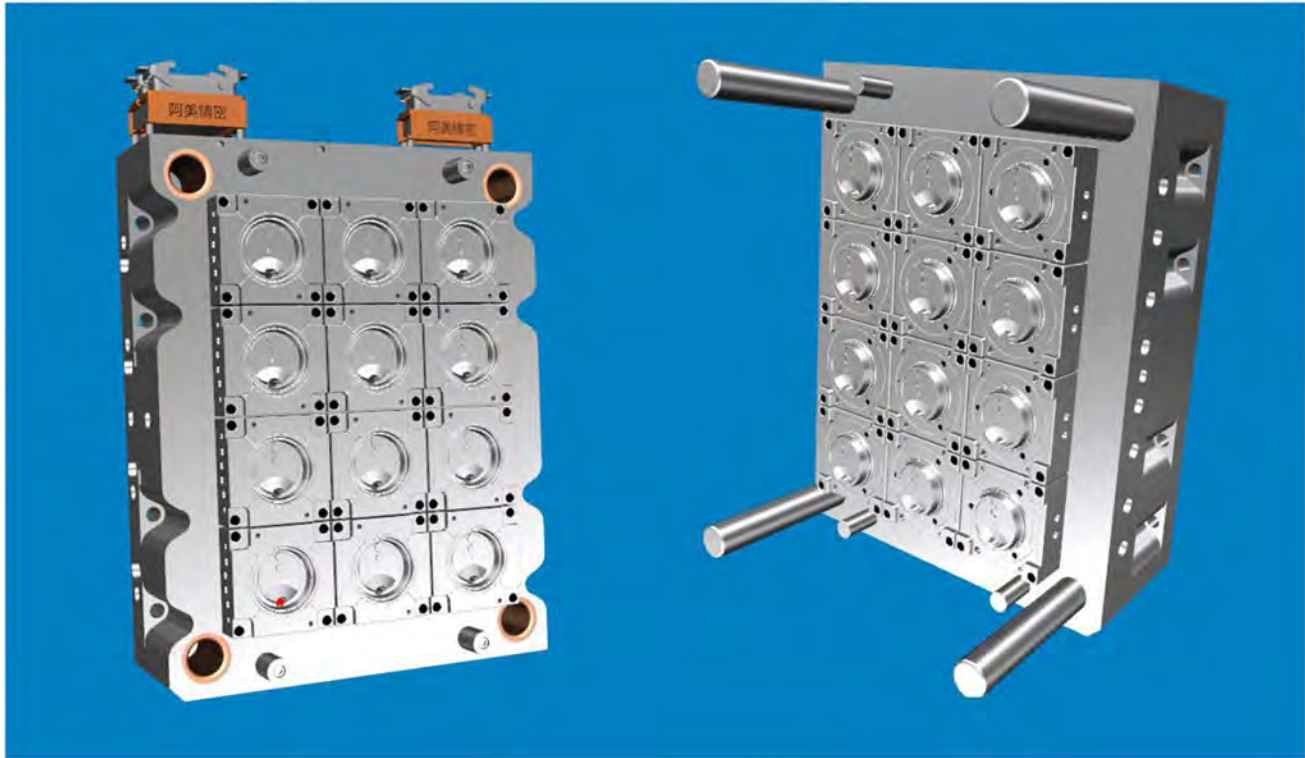


CAVITIES	16CAV
CYCLE TIME	6.5S
MOULD SIZE	650X880X550
MACHINE SIZE	360T~400T
PP MELT TEMPERATURE	300 °C
COOLING WATER TEMPERATURE	16-20°C
COOLING WATER PRESSURE	0.5~0.6Mpa

90 LID MOULD

(12 CAVITIES SAMPLE)

Daily output: approximately 172,000 pieces per day, 24 hours per day.

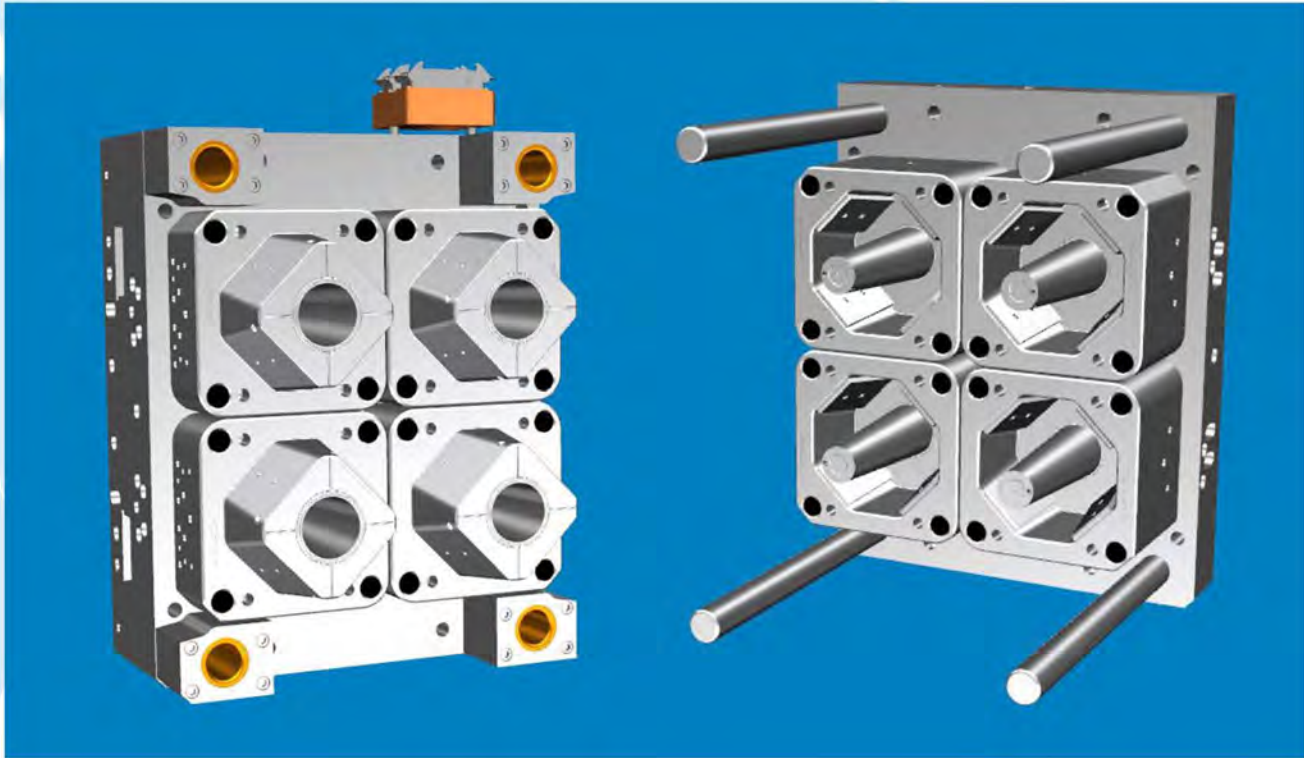


CAVITIES	12CAV
CYCLE TIME	6.0S
MOULD SIZE	600X770X521
MACHINE SIZE	350T~380T
PP MELT TEMPERATURE	300 °C
COOLING WATER TEMPERATURE	16-20°C
COOLING WATER PRESSURE	0.5~0.6Mpa

901000 CUP MOULD

(4 CAVITIES SAMPLE)

Daily output: approximately 31,000 pieces per day, 24 hours per day.

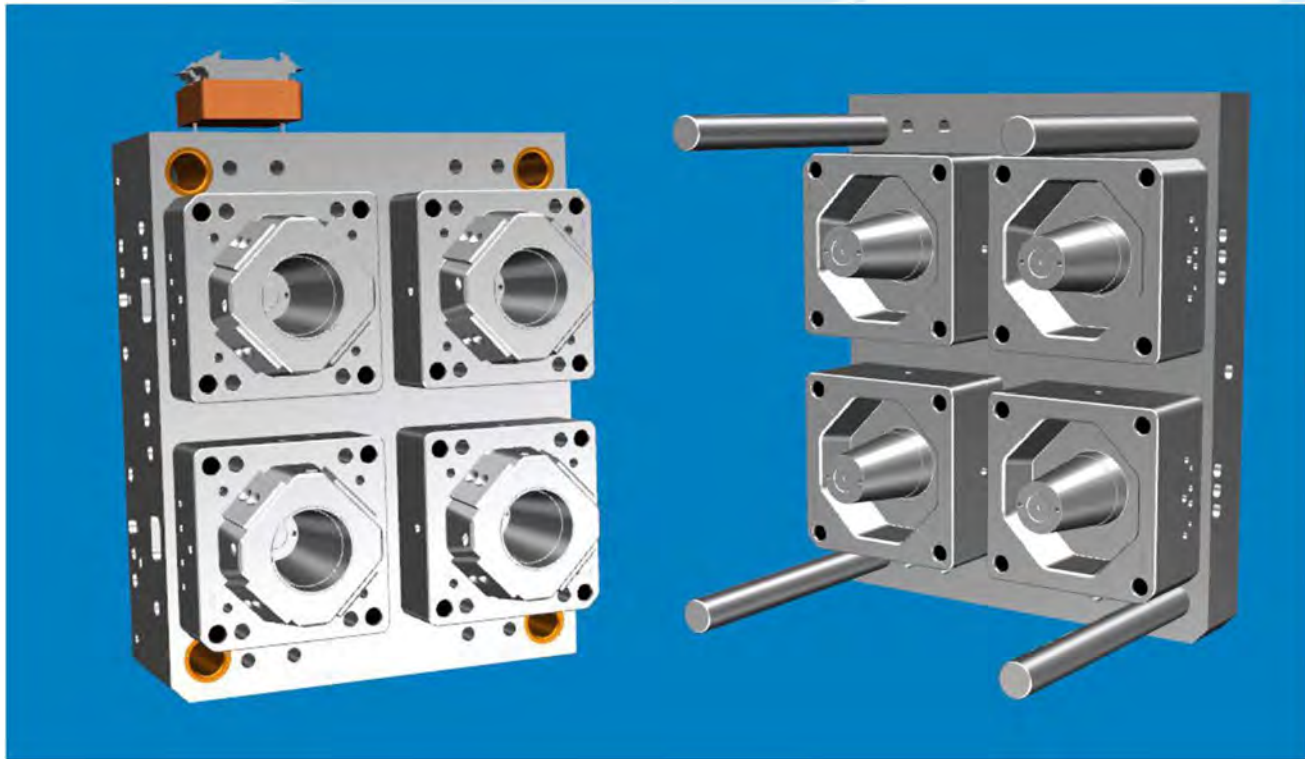


CAVITIES	4CAV
CYCLE TIME	11S
MOULD SIZE	620X780X640
MACHINE SIZE	360T~420T
PP MELT TEMPERATURE	300°C
COOLING WATER TEMPERATURE	16-20°C
COOLING WATER PRESSURE	0.5~0.6Mpa

119-1000 CUP MOULD

(4 CAVITIES SAMPLE)

Daily output: approximately 40,000 pieces per day, 24 hours per day.



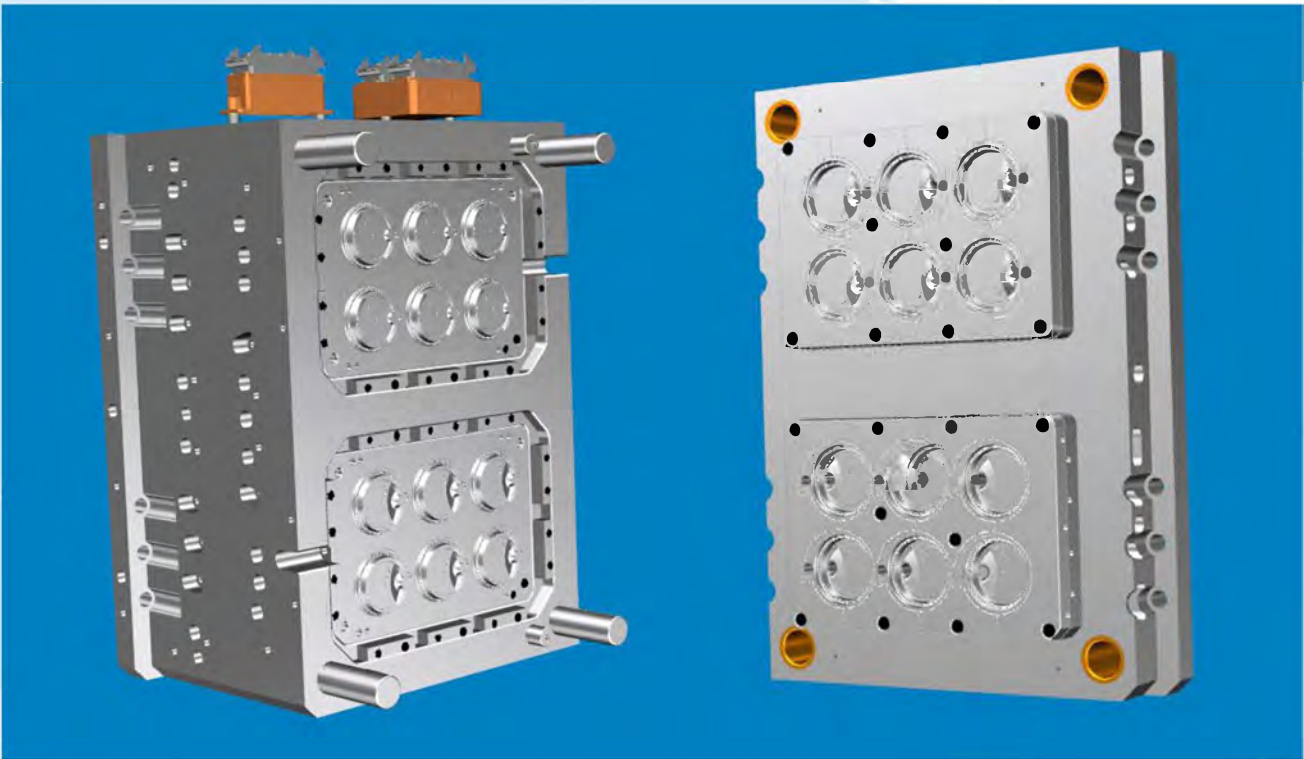
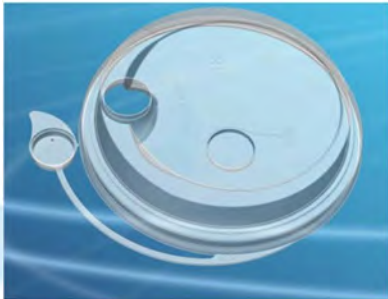
CAVITIES	4CAV
CYCLE TIME	8.5S
MOULD SIZE	650X800X555
MACHINE SIZE	360T~400T
PP MELT TEMPERATURE	300℃
COOLING WATER TEMPERATURE	16-20℃
COOLING WATER PRESSURE	0.5~0.6Mpa

90 Inverse Design

Mould Lid with insert

(12 CAVITIES SAMPLE)

Daily output: approximately 152,000 pieces per day, 24 hours per day.

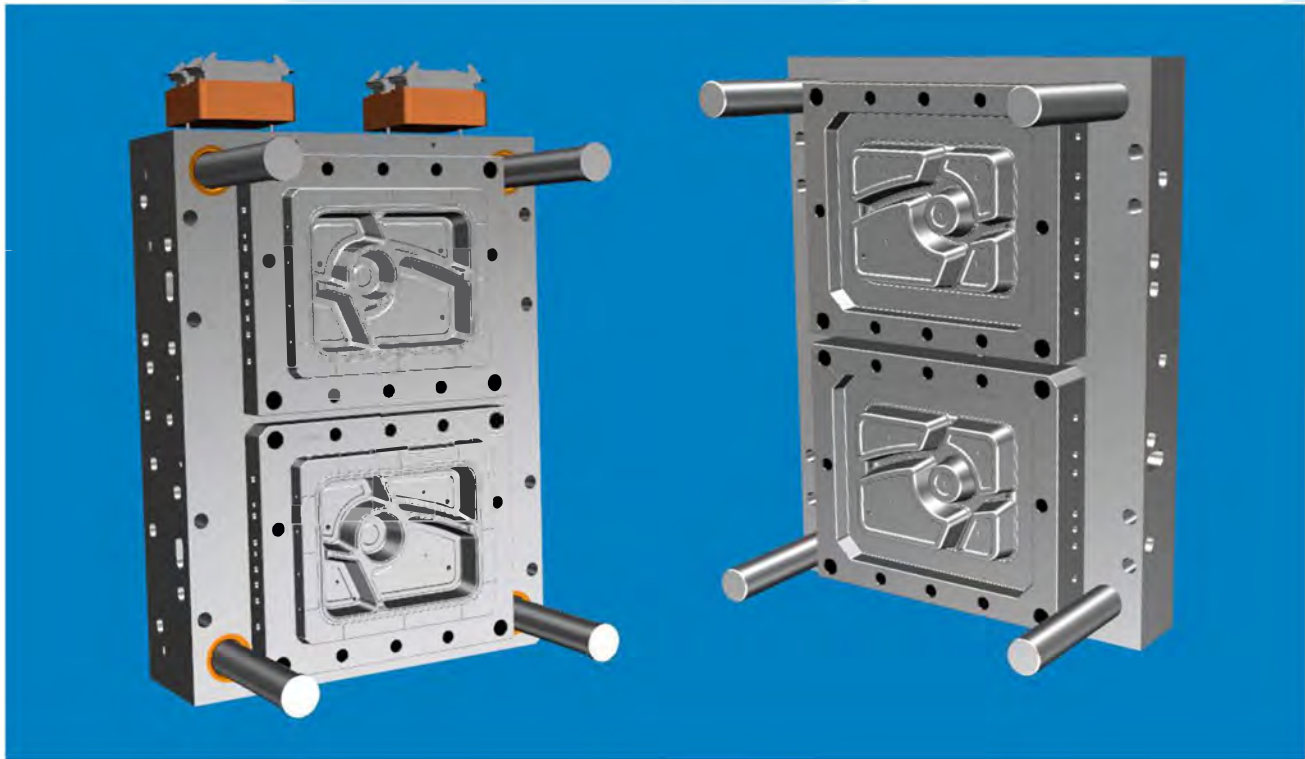


CAVITIES	12CAV
CYCLE TIME	6.8S
MOULD SIZE	610X800X535
MACHINE SIZE	360T~380T
PP MELT TEMPERATURE	300℃
COOLING WATER TEMPERATURE	16-20℃
COOLING WATER PRESSURE	0.5~0.6Mpa

5 Slots Food Container MOULD

(2 CAVITIES SAMPLE)

Daily output: approximately 28,800 pieces per day, 24 hours per day.

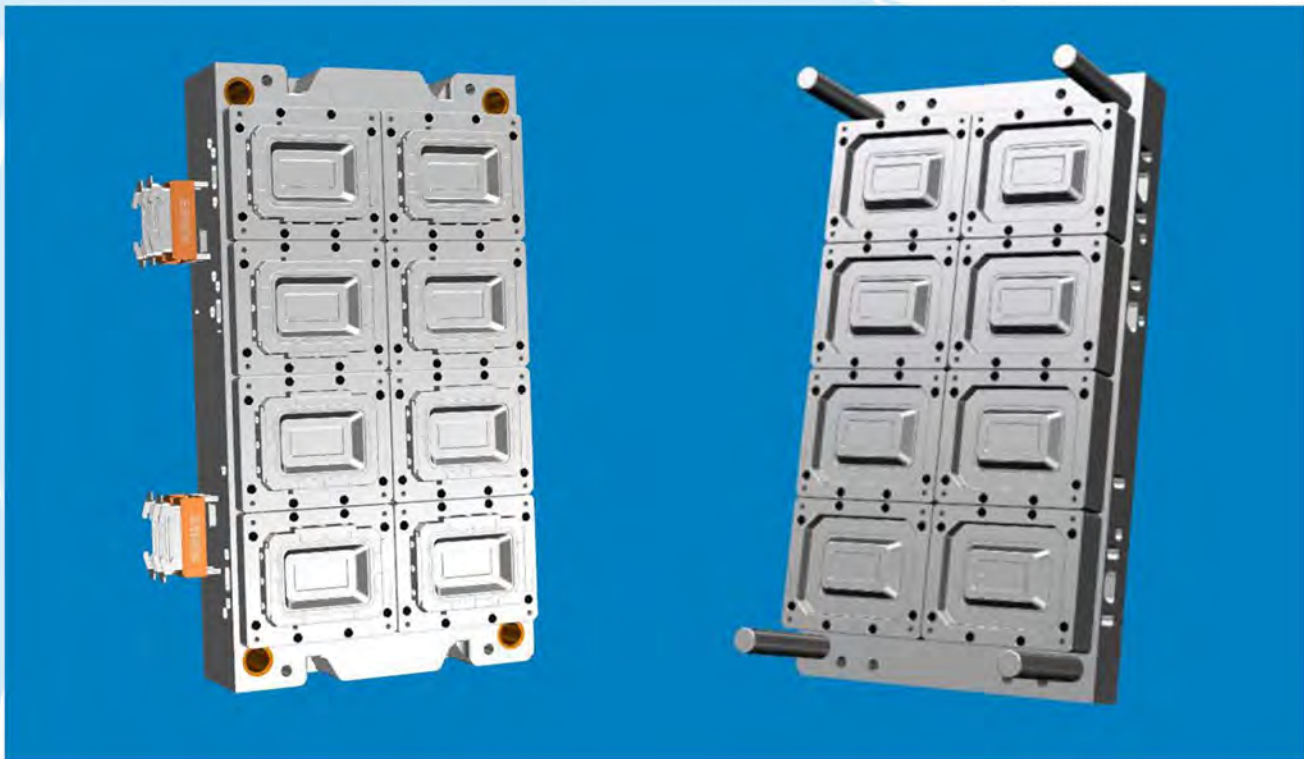
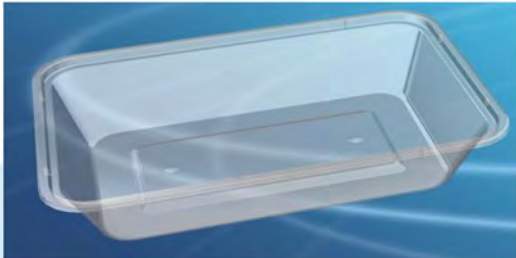


CAVITIES	2CAV
CYCLE TIME	6.0S
MOULD SIZE	600*800*395
MACHINE SIZE	300T~360T
PP MELT TEMPERATURE	300℃
COOLING WATER TEMPERATURE	16-20℃
COOLING WATER PRESSURE	0.5~0.6Mpa

500 Food packing Container Mould

(8 CAVITIES SAMPLE)

Daily output: approximately 111,000 pieces per day, 24 hours per day.

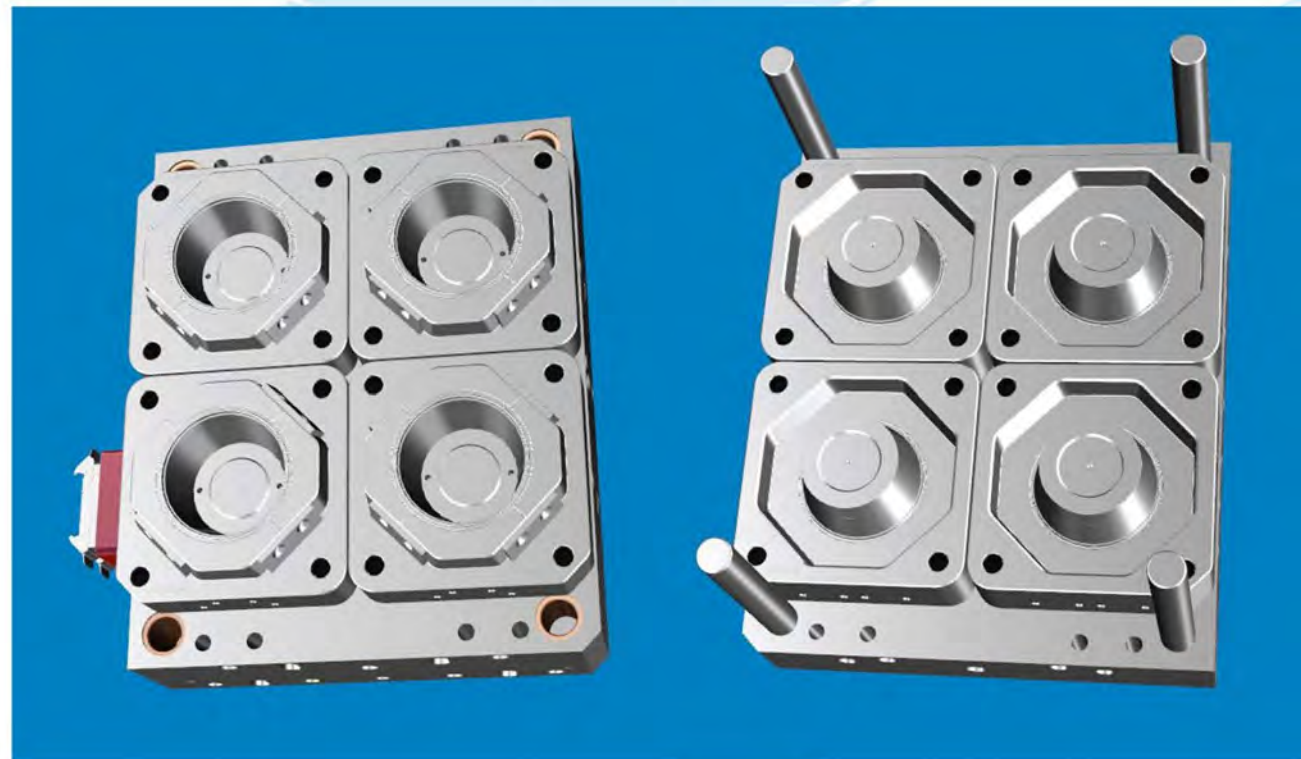


CAVITIES	8CAV
CYCLE TIME	6.2S
MOULD SIZE	1145X620X410
MACHINE SIZE	420T~460T
PP MELT TEMPERATURE	300℃
COOLING WATER TEMPERATURE	16-20℃
COOLING WATER PRESSURE	0.5~0.6Mpa

1250 Bowl MOULD

(4 CAVITIES SAMPLE)

Daily output: approximately 55,000 pieces per day, 24 hours per day.



CAVITIES	4CAV
CYCLE TIME	6.2S
MOULD SIZE	760X625X470
MACHINE SIZE	420T~460T
PP MELT TEMPERATURE	300°C
COOLING WATER TEMPERATURE	16-20°C
COOLING WATER PRESSURE	0.5~0.6Mpa

Mould Samples

